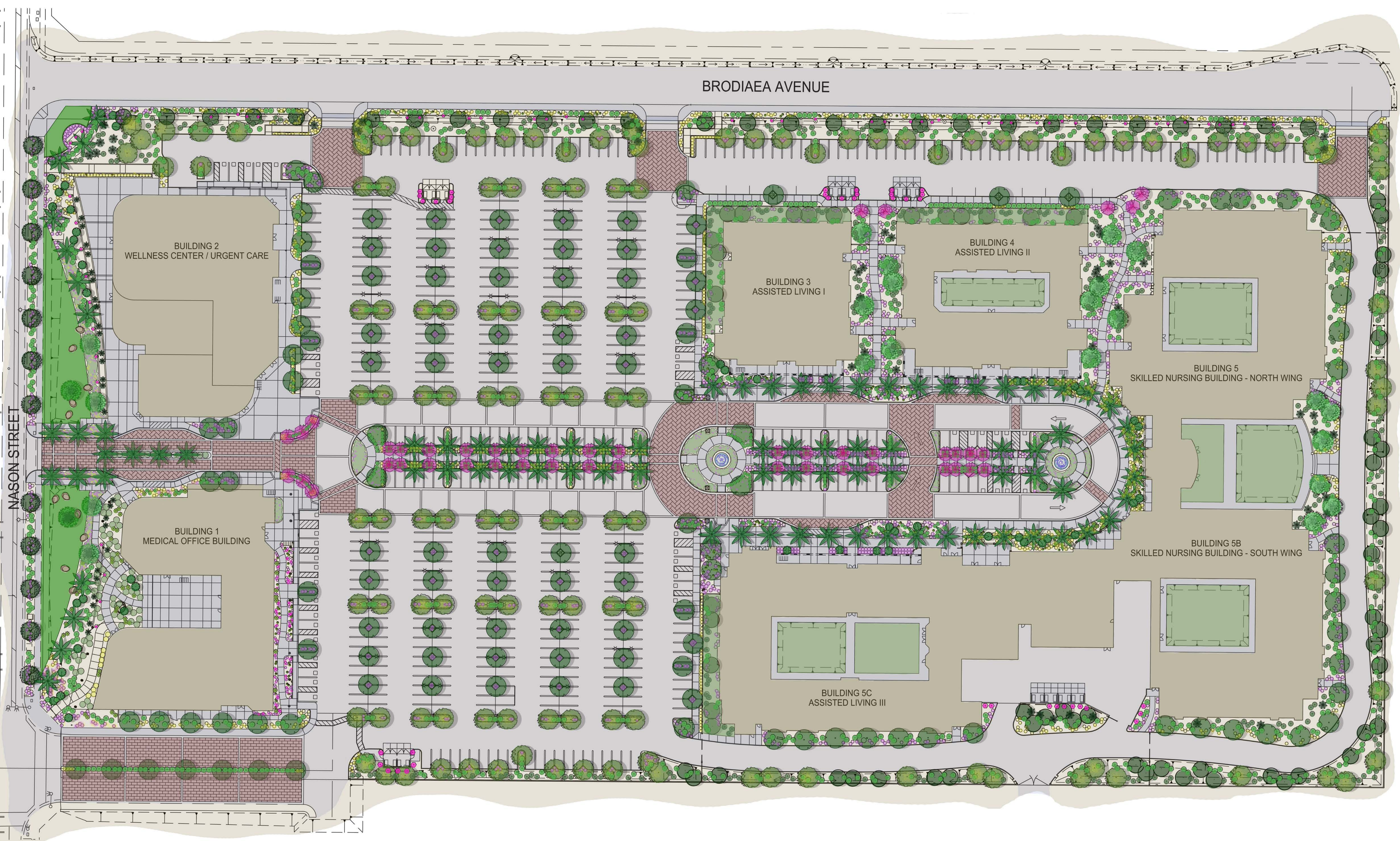


PLANT MATERIAL LEGEND

TREES		
SYM.	NAME	COMMENTS
	Acacia salicoides	24' Box Standard
	Ulmus parvifolia	24' Box Standard
	Cercidium 'Desert Museum'	24' Box Low Branching
	Lagerstroemia indica 'Pink'	24' Box Standard
	Pinus canariensis	24' Box Standard
	Cinnamomum camphora	24' Box Standard
	Carpinus tree	24' Box Standard
PALMS		
SYM.	NAME	COMMENTS
	Phoenix dactylifera	20' BTH Date Palm
	Chenacrops humilis	24' Box Multi Trunk
	Mediterranean Fan Palm	24' Box Multi Trunk
LARGE SHRUBS		
SYM.	NAME	SIZE
	Cassia nemophylla	5 gal. Desert Cassia
	Nerum Oleander 'Petite Pink'	5 gal. Dwarf Oleander
	Tecoma stans angustata	5 gal. Yellow Bells
	Caesalpinia pulcherrima	5 gal. Red Bird of Paradise
	Eremophila maculata	5 gal. Valentine Bush
MEDIUM SHRUBS		
SYM.	NAME	SIZE
	Leucophyllum laevigatum	5 gal. Chinushan Sage
	Russelia eculeatiflora	5 gal. Coral Fountain
	Ruellia perularis	5 gal. Purple Ruellia
	Salvia greggii 'Sierra Linda'	5 gal. Sierra Linda Sage
	Salvia leucantha	5 gal. Mexican Bush Sage
GROUND COVERS		
SYM.	NAME	SIZE
	Carissa grandiflora 'Green Carpet'	5 gal. Green Carpet Natal Plum
	Dalea capitata 'Sierra Gold'	5 gal. Gold Dalea
	Lantana montevidensis 'Trailing Purple'	5 gal. Purple Trailing Lantana
	Lantana montevidensis 'New Gold'	5 gal. Gold Trailing Lantana
	Roseranus c. 'Huntington Carpet'	5 gal. Huntington Carpet Rosemary
	Euphorbia rigida	5 gal. Gopher Plant
ACCENTS		
SYM.	NAME	SIZE
	Bougainvillea 'Oh La La'	5 gal. Oh La La Bougainvillea
	Bougainvillea 'Barbara Karst'	5 gal. Barbara Karst Bougainvillea
	Caesalpinia pulcherrima	5 gal. Red Bird of Paradise
	Dasylirion wheeleri	5 gal. Desert Spoon
	Hesperaloe parviflora	5 gal. Red Yucca
	Hesperaloe funifera	5 gal. Giant Hesperaloe
	Agave palmeri	5 gal. Palmers Agave
	Cycas revoluta	15 gal. Sago Palm
AGAVES AND YUCCAS		
SYM.	NAME	SIZE
	Agave americana	15 gal. Century Plant
	Agave americana var. marginata	15 gal. Variegated Century Plant
	Agave colorata	5 gal. Mescal Cento
	Agave desmetiana	5 gal. Agave
	Yucca recurvifolia	5 gal. Pendulous Yucca
INERT MATERIALS		
SYM.	DESCRIPTION	
	BOULDERS TO BE 'CRESTA'	
	ALL PLANTER AREAS TO RECEIVE 'DESERT GOLD' DECOMPOSED GRANITE (DG) 3/8" MINUS WITH THE FINES MAXIMUM DG TO BE COMPACTED TO A 2" DEPTH AFTER BEING THOROUGHLY WETTED AND EITHER ROLLED OR TAMPED.	
LAWN		
SYM.	NAME	
	Synthetic Turf	
IRRIGATION SYSTEM:		
THE IRRIGATION SYSTEM SHALL BE FULLY AUTOMATIC AND CONTROLLED BY A EVAPOTRANSPIRATION (ET) BASED CONTROLLER WITH A RAIN SENSING OVERRIDE DEVICE. ALL SHRUBS WILL IRRIGATED WITH WATER EFFICIENT DRIP EMITTERS AND ALL TURF HEADS WILL HAVE AUTOMATIC CHECK VALVES TO PREVENT WATER RUN-OFF.		



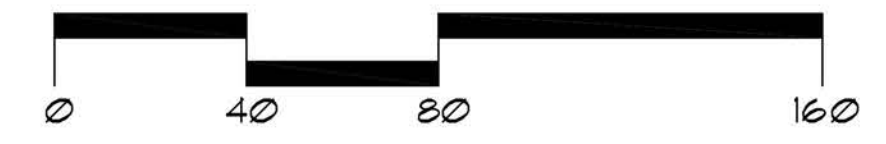
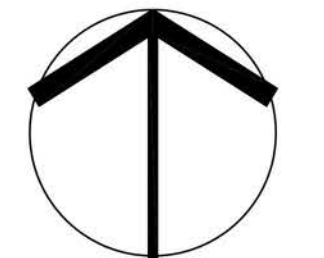
Riverside County Ordinance 859 Landscape Water Use Calculations	
Moreno Valley Medical Plaza	
1 Maximum Annual Water Allowance (MAWA)	
INPUT the total square footage of landscape = 188,832 S.F.	
INPUT the Hist. E to for the area = 55.1	
MAWA = 606,896 cu ft / yr	
2 Estimated Annual Water Use (EAWU)	
Hydrozone # 1	
INPUT square footage of hydrozone = 35,820	
INPUT Plant Factor = 0.7	
INPUT hydrozone irrigation efficiency = 0.75	
EAWU = 152,859 cu ft / yr	
Hydrozone # 2	
INPUT square footage of hydrozone = 81,530	
INPUT Plant Factor = 0.5	
INPUT hydrozone irrigation efficiency = 0.9	
EAWU = 156,271 cu ft / yr	
Hydrozone # 3	
INPUT square footage of hydrozone = 62,385	
INPUT Plant Factor = 0.2	
INPUT hydrozone irrigation efficiency = 0.9	
EAWU = 63,763 cu ft / yr	
SubTotal EAWU = 402,892 cu ft / yr	
Input Irrigation System Operation Factor = 0.35	
Total EAWU = 473,991	
MAWA - EAWU = 132,907 cu ft / yr	
(this number must be positive)	
PERCENTAGE OF WATER SAVED RELATIVE TO MAX. ALLOWED = 22%	

MORENO VALLEY MEDICAL PLAZA

NASON STREET & BRODIAEA AVENUE

MORENO VALLEY, CALIFORNIA

CONCEPTUAL LANDSCAPE PLAN



GRAPHIC SCALE
1"=40'-0"

JULY 18, 2017