



**GENERAL BIOLOGICAL ASSESSMENT REPORT
MORENO VALLEY FESTIVAL
CITY OF MORENO VALLEY, CALIFORNIA**

Prepared for:

**Moreno Valley Festival, LTD
1072 Bristol Street, Suite 100
Costa Mesa, CA 92626**

Prepared by:

**Hernandez Environmental Services
29376 North Lake Drive
Lake Elsinore, CA 92530**

November 2015

TABLE OF CONTENTS

Summary4

1.0 Introduction6

 1.1 Project Site Location6

 1.2 Project Description6

2.0 Methodology6

 2.1 Literature Review6

 2.2 Field Survey7

3.0 Existing Conditions and Results7

 3.1 Environmental Setting7

 3.2 Soils.....7

 3.3 Plant and Habitat Communities8

 3.3.1 Developed Habitat8

 3.3.2 Disturbed Non-native Vegetation Habitat.....8

 3.3.3 Disturbed Non-native Grasses Habitat.....8

 3.3.4 Disturbed Coastal Sage Scrub Habitat9

 3.3.5 Ornamental Vegetation Habitat9

 3.3.6 Streambed Habitat9

 3.3.6 Mulefat Habitat.....9

4.0 Sensitive Biological Resources.....9

 4.1 Threatened and Endangered Species.....9

 4.1.1 Threatened and Endangered Plants10

 4.1.2 Threatened and Endangered Animals12

 4.2 Species with other Special Status Listings.....14

 4.3 Critical Habitats.....14

 4.4 Nesting Birds.....14

 4.5 Wildlife Movement Corridors15

 4.6 Western Riverside Multiple Species Habitat Conservation Plan15

 4.6.1 Section 6.1.2 Protection of Species Associated with Riparian/Riverine Areas and Vernal Pools ...15

 4.6.2 Section 6.1.3 Protection of Narrow Endemic Plant Species15

 4.6.3 Section 6.1.4 Guidelines Pertaining to the Urban/Wildlands Interface15

4.6.4 Section 6.3.2 Guidelines Additional Survey Needs and Procedures15

4.7 Other City, County, Regional, State, or Federal Conservation Plans15

4.8 State and Federal Jurisdictional Drainages16

4.9 Oak Trees16

5.0 Project Impacts16

5.1 Impacts to Existing Habitats16

5.2 Impacts to Sensitive Species16

5.3 Nesting Birds18

5.4 Impacts to Critical Habitat18

5.5 Impacts to Wildlife Movement Corridors18

5.6 Conflict with Local Policies or Ordinances Protecting Biological Resources18

5.7 Conflict with the Provisions of an Adopted Habitat Conservation Plan, Natural Community Conservation Plan, or Other Approved Local, Regional, or State Habitat Conservation Plan19

5.8 State and Federal Drainages19

5.9 Impacts to Section 6.1.2 Protection of Species Associated with Riparian/Riverine Areas and Vernal Pools19

5.10 Impacts to Section 6.1.3 Protection of Narrow Endemic Plant Species19

5.11 Impacts to Section 6.1.4 Guidelines Pertaining to the Urban/Wildlands Interface19

5.12 Impacts to Section 6.3.2 Guidelines Additional Survey Needs and Procedures19

5.11 Impacts to Oak Trees20

6.0 Recommendations20

6.1 San Bernardino Aster20

6.2 Western Riverside MSHCP Covered Species20

6.3 Nesting birds20

7.0 Certification22

8.0 References23

FIGURES

Figure 1 - Location Map

Figure 2 - Vicinity Map

Figure 3 - Project Plans

Figure 4 - Habitat Map

APPENDICES

Appendix A - Species List

Appendix B - Probability List

Appendix C - Site Photos

Appendix D - Soils Survey

Summary

Hernandez Environmental Services (HES) was contracted by Moreno Valley Festival to prepare a General Biological Assessment (GBA) and Western Riverside County Multiple Species Habitat Conservation Plan (MSHCP) Consistency Analysis for a 49-acre proposed project site. The proposed project consists of a commercial/retail and mixed use development. The project site consists of Assessor Parcel Numbers (APNs) 481-020-017, 481-020-019, 481-020-022, 481-020-023, 481-020-028, 481-020-028, 481-090-009, 481-090-018, 481-090-020, 481-090-021, 481-090-022, 481-090-029, 481-090-032, and 481-090-033.

On July 13, 2015, Juan Hernandez, Principal Biologist for HES, conducted a field survey of the approximate 49-acre project site. The project site contains seven habitat types: 23.4 acres of developed habitat, 20.2 acres of disturbed non-native vegetation habitat, 3.20 acres of disturbed non-native grasses habitat, 1.15 acres of disturbed coastal sage scrub, 0.87 acres of ornamental vegetation habitat, 0.16 acres of streambed, and 0.07 acres of mulefat habitat. The project site also contains approximately 0.16 acres of streambed, and 0.07 acres of mulefat habitat for a total of 0.23 acre of riparian habitat. No wildlife movement corridors were found to be present on the project site. The 20.2 acres of disturbed non-native vegetation habitat, and the 3.20 acres of disturbed non-native grasses habitat, is suitable for burrowing owl. Focused surveys were performed in compliance with TLMA requirements. No burrowing owl were found.

The proposed project is expected to impact 23.4 acres of developed habitat, 20.2 acres of disturbed non-native vegetation habitat, 3.20 acres of disturbed non-native grasses habitat, 1.15 acres of disturbed coastal sage scrub, 0.87 acres of ornamental vegetation habitat, 0.16 acres of streambed, and 0.07 acres of mulefat habitat.

The project site was found to have the potential for San Bernardino aster to occur. This species is not covered under the Western Riverside MSHCP but through participation in the plan, and the land acquisition and preservation by the plan, this species would be adequately covered. Cooper's Hawk, Bell's Sage Sparrow, Coastal horned lizard, Orange-throat Whiptail, Coastal Whiptail, Red-diamond Rattlesnake, California Horned Lark, San Diego Black-tailed Jackrabbit are fully covered species under the Western Riverside MSHCP. The proposed project must be consistent with the Western Riverside MSHCP. Payment of the appropriate development mitigation fees will mitigate any impacts to these species. Further, it is recommended that three days prior to any ground disturbing activities or vegetation removal, a qualified biological monitor should conduct a preconstruction survey to identify any sensitive biological resources to flag for avoidance. Any reptile species that may be present within the project area shall be relocated outside of the impact areas.

Due to the presence of suitable nesting bird habitat on the project site, it is recommended that vegetation removal be conducted during the non-nesting season for migratory birds to avoid direct impacts. The migratory bird nesting season is between February 1 and September 15. If vegetation removal will occur during the migratory bird nesting season, between February 1 and September 15, it is recommended that pre-construction nesting bird surveys be performed within three days prior to vegetation removal.

Impacts to approximately 0.16 acres of streambed, and 0.07 acres of mulefat habitat for a total of 0.23 acre of riparian habitat will require consultation with the California Department of Fish and Wildlife, the U.S. Army Corps of Engineers, and the Santa Ana Regional Water Quality Control Board to determine the need for permits that must be obtained prior to initiation of construction of the proposed project. In addition, the loss of Western

Riverside MSHCP riverine resources will require preparation of an MSHCP Determination of Biologically Equivalent or Superior Preservation (DBESP).

1.0 Introduction

Hernandez Environmental Services (HES) was contracted by Moreno Valley Festival to prepare a General Biological Assessment (GBA) and Western Riverside County Multiple Species Habitat Conservation Plan (MSHCP) Consistency Analysis for a 49-acre proposed project site, which is comprised of Assessor's Parcel Numbers (APNs) 481-020-017, 481-020-019, 481-020-022, 481-020-023, 481-020-028, 481-020-028, 481-090-009, 481-090-018, 481-090-020, 481-090-021, 481-090-022, 481-090-029, 481-090-032, and 481-090-033. The proposed project consists of a commercial/retail and mixed use development.

1.1 Project Site Location

The project site is located in the City of Moreno Valley in Riverside County at the southeast intersection of Heacock Street and Ironwood Avenue (Figure 1). The southern boundary is defined by the Moreno Valley Freeway (CA-60). The project site consists of 15 parcels totaling approximately 49.0 acres. Approximately 27.21 acres are developed with the existing Festival Shopping Center and commercial development south of Hemlock Avenue; the remaining 22.39 acres are undeveloped and vacant (Figure 2). The site is located within the United States Geological Survey (USGS) 7.5-Minute Topographic Map Sunnymead Quadrangle. The approximate center point is 33°56'28"N, 117°14'33"W.

1.2 Project Description

The proposed project is the development of the Moreno Valley Festival (Figure 3). The plan area includes approximately 49.0 acres; a portion of the site is currently developed with the Festival Shopping Center on the north side of Hemlock Street and with a fast food establishment and miscellaneous commercial development on the south side of Hemlock Street.

The purpose of this GBA and Western Riverside County MSHCP Consistency Analysis is to identify any potential biological resources that may be present on or adjacent to the project site.

2.0 Methodology

2.1 Literature Review

HES conducted a literature review and reviewed aerial photographs and topographic maps of the project site and surrounding areas. The Sunnymead quad and adjacent surrounding eight quads were used to identify sensitive species in the California Natural Diversity Data Base (CNDDDB). Additional resources reviewed during the literature search included the United States Fish and Wildlife (USFWS) Endangered Species Lists, Forest Service List, and the California Native Plant Society's (CNPS) Rare plant lists to obtain species information for the project area.

2.2 Field Survey

On July 13, 2015, Juan Hernandez, Principal Biologist for HES, conducted a field survey of the approximate 49-acre project site. The ambient temperature at 9:30 a.m. was 72° Fahrenheit, sunny, with zero to three mile per hour winds from the northeast. The purpose of the field survey was to document the existing habitat conditions, obtain plant and animal species information, view the surrounding uses, assess the potential for state and federal waters, and assess the potential for wildlife movement corridors, sensitive species, and nesting habitat.

The entire project site was surveyed. Linear transects spaced approximately 50 feet apart were walked for 100 percent coverage. All species observed were recorded and are listed in Appendix A. Global Positioning System (GPS) waypoints were taken to delineate specific habitat types, species locations, and any other information that would be useful for the assessment of the property.

3.0 Existing Conditions and Results

3.1 Environmental Setting

The project site is located in a heavily urbanized area in the City of Moreno Valley. The project site has residential homes to the north, residential homes to the east, residential homes to the west, and CA-60 and commercial properties to the south. The project site has been heavily disturbed and no quality native habitat remains onsite. Portions of the property have already been developed with commercial/retail buildings. Other portions of the property consist of vacant, disked lots. The elevation of the project site varies from 1,674 feet above sea level (ASL) to 1,641feet ASL. There is a small, disturbed, non-meandering ephemeral drainage located in the northwest portion of the property. The drainage crosses the project site from west to east and empties into Indian Basin.

3.2 Soils

The Natural Resources Conservation Service Web Soil Survey identified eight (8) soil types within the GBA 62.50-acre study area. The following soil types are identified in the Soil Survey: Greenfield sandy loam(GyA), 0 to 2 percent slope; Greenfield sandy loam (GyC2), 2 to 8 percent slopes eroded,; Greenfield sandy loam (GyD2), 8 to 15 percent slopes, eroded; Hanford coarse sandy loam (HcC), 2 to 8 percent slopes; Monserate sandy loam, 0 to 5 percent slopes; Ramona sandy loam(RaB2), 2 to 5 percent slopes, eroded; Ramona sandy loam(RaB3), 0 to 5 percent slopes, severely eroded; Tujunga loamy sand (TvC), channeled, 0 to 8 percent slopes. Tujunga Loamy Sand (TvC), channeled 0 to 8 percent slope, is the only hydric soil in the study area. Refer to Appendix D.

3.3 Plant and Habitat Communities

The project site contains seven habitat types: 23.4 acres of developed habitat, 20.2 acres of disturbed non-native vegetation habitat, 3.20 acres of disturbed non-native grasses habitat, 1.15 acres of disturbed coastal sage scrub, 0.87 acres of ornamental vegetation habitat, 0.16 acres of streambed, and 0.07 acres of mulefat habitat (Figure 4).

Table 1
Onsite Habitat

Developed Habitat	Disturbed Non-native Vegetation Habitat	Disturbed Non-native Grasses Habitat	Disturbed Coastal Sage Scrub	Ornamental Vegetation Habitat	Streambed Habitat	Mulefat Habitat
23.4 Acres	20.2 Acres	3.20 Acres	1.15 Acres	0.87 Acres	0.16 Acres	0.07 Acres

The following is a description of each habitat type:

3.3.1 Developed Habitat

Approximately 23.4 acres of developed habitat exists on the project site. The developed habitat contains existing commercial and retail buildings and the majority of the buildings are currently being utilized. This habitat also included parking lot areas, and contain no native habitat and wildlife value.

3.3.2 Disturbed Non-native Vegetation Habitat

The project site contains approximately 20.2 acres of disturbed non-native vegetation habitat. This habitat type has been disturbed and native vegetation has been removed by disking or other anthropomorphic activities. Dominant plant species found in this habitat type consist of black mustard (*Brassia nigra*), mustard (*Brassica tournefortii*), tacalote (*Centaurea melitensis*), bullthistle (*Cirsium vulgare*), field bindweed (*Convolvulus arvensis*), heron's bill (*Erodium cicutarium*), horehound (*Marrubium vulgare*), tree tobacco (*Nicotiana glauca*), castor bean (*Ricinus communis*), and Russian thistle (*Salsola tragus*).

3.3.3 Disturbed Non-native Grasses Habitat

The project site contains approximately 3.20 acres of disturbed non-native grasses habitat. This habitat type has been disturbed and native vegetation has been removed by disking or other anthropomorphic activities. Dominant plant species found in this habitat type consist of slim oats (*Avena barbata*), ripgut

brome (*Bromus diandrus*), soft chess (*Bromus hordeaceus*), foxtail (*Bromus madritensis*), foxtail barley (*Hordeum murinum*), and common barley (*Hordeum vulgare*).

3.3.4 Disturbed Coastal Sage Scrub Habitat

The project site contains approximately 1.15 acres of disturbed coastal sage scrub habitat. This habitat type has shrubs commonly associated with coastal sage scrub, but shows evidence of having been disturbed in the past. The coastal sage scrub does not look very well developed, and has sections where it has obviously been disturbed by anthropomorphic activities. Dominant vegetation in this habitat type include: brittlebush (*Encelia farinosa*), California buckwheat (*Eriogonum fasciculatum*), lotus (*Acmispon strigosus*), gourd (*Cucurbita foetidissima*), tarweed (*Deinandra fasciculata*), black sage (*Salvia mellifera*) and telegraph weed (*Heterotheca grandifolia*).

3.3.5 Ornamental Vegetation Habitat

The project site contains approximately 0.87 acres of ornamental vegetation habitat. This habitat type has been created and is composed entirely of non-native trees and shrubs. Common species associated with this habitat type are eucalyptus (*Eucalyptus* sp.), oleander (*Nerium oleander*), and Peruvian pepper tree (*Schinus molle*).

3.3.6 Streambed Habitat

The project site contains approximately 0.16 acres of streambed habitat. This habitat is characterized by sandy streambed with small amounts of native and non-native vegetation. Vegetation species associated with this habitat include: Mexican fan palm (*Washingtonia robusta*), tree tobacco, horseweed (*Erigeron canadensis*), heliotrope (*Heliotropium curassavicum*), sunflower (*Helianthus annuus*), and tamarisk (*Tamarix* sp.).

3.3.6 Mulefat Habitat

The project site contains approximately 0.07 acres of mulefat habitat. The ephemeral drainage contains small patches of areas dominated by mulefat (*Baccharis salicifolia*).

4.0 Sensitive Biological Resources

4.1 Threatened and Endangered Species

A total of 51 sensitive species of plants and 54 sensitive species of animals have the potential to occur on or within the vicinity of the GBA study area. These include those species listed or candidates for listing by the U. S. Fish and Wildlife Service (USFWS), California Department of Fish and Wildlife (CDFW) and California Native Plant Society (CNPS). All habitats with the potential to be used by

sensitive species was evaluated during the site visit and a determination has been made for the presence or probability of presence within this report. This section will address those species listed as Candidate, Rare, Threatened, or Endangered under the state and federal endangered species laws or directed to be evaluated under the Western Riverside Multiple Species Habitat Conservation Plan (MSHCP). Sensitive species which have a potential to occur will also be discussed in this section. All other special status species are addressed within Appendix B.

4.1.1 Threatened and Endangered Plants

A total of 11 plant species were identified as state and/or federally listed as Threatened, Endangered, or Candidate. All species have a rank of 1B.1 or 1B.2 in the CNPS Rare Plant Inventory. The GBA survey area is not located within the Western Riverside MSHCP narrow endemic plant overlay and a habitat assessment for narrow endemic plants was not required; however, several of the species identified below are covered species under the MSHCP.

Munz's Onion

Munz's onion (*Allium munzii*) is federally listed as Endangered and State listed as Threatened; the species rank is 1B.1 in the CNPS rare plant inventory. The species is found in grassy openings in coastal-sage scrub vegetation at elevations ranging from 300-900m. Its blooming period is from April to May. The project site has been disked and there is no suitable habitat for this species. **This species is not present.**

San Diego Ambrosia

San Diego Ambrosia (*Ambrosia pumila*) is a federally listed Endangered species and is a rank 1B.1 species in the CNPS rare plant inventory. The species is found in disturbed sites at elevations ranging from 50 – 600 m. Its blooming period is from April to July. The project site has been disked and the disturbed habitat may be suitable for this species. **This species is not present.**

Marsh Sandwort

Marsh sandwort (*Arenaria paludicola*) is federally and State listed as Endangered and is ranked as 1B.1 in the CNPS rare plant inventory. The species is found in wet meadows and marshes at elevations less than 300 meters. The species blooms from late spring into summer. The project site has been disked and the disturbed is not suitable for this species. The basin area on the east side of the property is regularly maintained and does not support suitable habitat for marsh sandwort. **This species is not present.**

San Jacinto Valley Crownscale

San Jacinto Valley crownscale (*Atriplex coronata* var. *notatior*) is a federally listed Endangered species and is ranked as 1B.1 in the CNPS rare plant inventory. The species is found in alkaline flats at elevations ranging from 400-500 meters. Its blooming period is April to August. The project site has been disked and the disturbed habitat is not suitable for this species. **This species is not present.**

Nevin's Barberry

Nevin's barberry (*Berberis nevinii*) is a federally and State listed endangered species and is a rank 1B.1 species in the CNPS rare plant inventory. The species is found in sandy to gravelly soils, washes, and chaparral habitats at elevations less than 650 meters. It blooms from March to May. The project site has been disked and the disturbed habitat is not suitable for this species. **This species is not present.**

Thread-leaved Brodiaea

Thread-leaved brodiaea (*Brodiaea filifolia*) is a federally listed Threatened and State listed Endangered species. The species is ranked 1B.1 in the CNPS rare plant inventory. This species occurs in grassland habitats and vernal pools at elevations ranging from 25 to 860 meters. Its blooming period is from March to June. The project site has been disked and the disturbed habitat is not suitable for this species. The basin area on the east side of the property is regularly maintained and does not support suitable habitat for thread-leaved brodiaea. **This species is not present.**

Salt Marsh Bird's-Beak

Salt marsh bird's-beak (*Chloropyron maritimum* ssp. *maritimum*) is a federally and State listed Endangered species and is ranked 1B.2 in the CNPS rare plant inventory. This species occurs in coastal salt marsh habitat at elevations less than 10 meters. Its blooming period is from May to October. The project site has been disked and the disturbed habitat is not suitable for this species. **This species is not present.**

Slender-Horned Spineflower

Slender-horned spineflower (*Dodecahema leptoceras*) is a federally and State listed Endangered species and is ranked 1B.1 in the CNPS rare plant inventory. This species occurs in sand or gravel soils at elevations ranging from 200 to 700 meters. Its flowering period is from May to June. The project site does not support suitable habitat for this species. **This species is not present.**

Santa Ana River Woollystar

Santa Ana River Woollystar (*Eriastrum densifolium* ssp. *sanctorum*) is a federally and state listed Endangered species and is ranked 1B.1 in the CNPS rare plant inventory. This species occurs in washes, floodplains, and dry riverbeds at elevations less than 500 meters. Its blooming period is from May to September. The project site does not support suitable habitat for this species. **This species is not present.**

Gambel's Water Cress

Gambel's water cress (*Nasturtium gambelii*) is a federally listed Endangered and State listed Threatened species; it is ranked 1B.1 in the CNPS rare plant inventory. This species occurs in marshes, streambanks, and lake margins at elevations less than 350 meters. Its blooming period is from May to August. The project site does not support suitable habitat for this species. **This species is not present.**

Spreading Navarretia

Spreading navarretia (*Navarretia fossalis*) is a federally listed Threatened species and is ranked 1B.1 in the CNPS rare plant inventory. This species is found in vernal pools and ditches at elevations ranging from 30 to 1300 meters. Its blooming period is from April to June. The project site does not support habitat suitable for this species. **This species is not present.**

4.1.2 Threatened and Endangered Animals

A total of 13 animal species listed as state and/or federally Threatened, Endangered, or Candidate or for special consideration under the Riverside County MSHCP will be reviewed in this section. Sensitive species which have a potential to occur will also be discussed in this section. All sensitive species identified within CNDDDB were evaluated; a complete list of species is included in Appendix B.

Southern Mountain Yellow-Legged Frog

Southern mountain yellow-legged frog (*Rana muscosa*) is a federally and state listed endangered species. Additionally the species is listed as a CDFW Species of Special Concern. Populations of the species in southern California occupy a wide elevational range from 1,200 feet to 7,500 feet. Habitat includes rocky, shaded streams with cool waters originating from springs and snowmelt. The project site does not support suitable habitat for this species. **This species is not present.**

Tricolored Blackbird

Tricolored bird (*Agelaius tricolor*) is State listed as endangered and listed by the CDFW as a Species of Special Concern. The species occupies freshwater marshes with canopies of willows (*Salix* spp.) and other riparian trees and require open accessible water and suitable foraging space. The project site does not support suitable nesting habitat for the species. **This species is not present.**

Burrowing Owl

Burrowing owl (*Athene cunicularia*) is a CDFW Species of Special Concern and a MSHCP covered species. The species lives in dry open areas with no trees and short grass. Focused surveys for the species were completed and returned negative. **This species is not present.**

Western Yellow-Billed Cuckoo

Western yellow-billed cuckoo (*Coccyzus americanus occidentalis*) is federally listed as threatened and state listed as Endangered. It is found in riparian habitat with vegetation such as willow and willow-cottonwood thickets with heavy underbrush. The species is restricted to cottonwood-dominated forests. The project site does not support suitable habitat for this species. **This species is not present.**

Southwestern Willow Flycatcher

Southwestern willow flycatcher (*Empidonax trailii extimus*) is federally and state listed as endangered. The species breeds in dense riparian habitats along rivers, streams, or other wetlands. Vegetation can be dominated by dense growths of willows, seepwillow (*Baccharis* sp.), tamarisk (*Tamarix* sp.) or other large trees. The project site does not support nesting habitat for this species. **This species is not present.**

Bald Eagle

Bald eagle (*Haliaeetus leucocephalus*) is State listed as endangered and is a delisted federal species. The species is fully protected under the regulations of the CDFW. It is found around wetlands, open water areas with an abundance of fish. It nests and roosts in large trees. The project site does not support suitable habitat for this species. **The species is not present.**

Coastal California Gnatcatcher

Coastal Californiagnatcatcher (*Polioptila californica californica*) is a federally listed threatened species and CDFW species of Special Concern. The species range is limited to the California coast and is found only in coastal sage scrub. The project site does not support suitable habitat for this species. **This species is not present.**

Least Bell's Vireo

Least Bell's vireo (*Vireo belii pusillus*) is a federally and State listed endangered species. It is found in riparian forests, riparian scrub, and riparian woodlands. The project site does not support suitable habitat for this species. **This species is not present.**

Santa Ana Sucker

Santa Ana sucker (*Catostomus santaanae*) is a federally listed threatened species and CDFW species of special concern. The species is restricted to southern California rivers. The project site does not support suitable habitat for this species. **This species is not present.**

Quino Checkerspot Butterfly

Quino checkerspot butterfly (*Euphydryas editha quino*) is a federally listed endangered species. Vegetation types that support the Quino checkerspot butterfly include coastal sage scrub, open chaparral, juniper woodland, and native grassland. Suitability of habitat is affected by soil and climatic conditions, as well as other ecological and physical factors. The species range is limited to Riverside and San Diego Counties. The project site does not support suitable habitat for this species. **This species is not present.**

Delhi Sands Flower-Loving Fly

Delhi sands flower-loving fly (*Rhaphimidas terminatus abdominalis*) is a federally listed endangered species. Its habitat is limited to dunes containing sandy soils of the Delhi series. The project site does not support suitable habitat for this species. **This species is not present.**

Stephens' Kangaroo Rat

Stephens' Kangaroo Rat (*Dipodomys stephensi*) is a federally listed endangered species and state listed threatened species. The species is found in coastal sage scrub, and in valley and foothill grasslands. The project site does not support suitable habitat for this species. **This species is not present.**

Lesser Long-Nosed Bat

Lesser long-nosed bat (*Leptonycteris yerbabuena*) is a federally listed endangered species. This species requires suitable roost sites and extensive populations of columnar cacti and agaves. The project site does not support suitable habitat for this species. **This species is not present.**

4.2 Species with other Special Status Listings

Species which are listed as California Species of Special Concern or are on the CDFW List of Rare plants have all been evaluated and the results can be reviewed within Appendix B. Any of these species that have the potential to be present or are considered present within the project area will have mitigation measures to avoid or minimize impacts in the Recommendations section of this report.

4.3 Critical Habitats

The project site is not located within critical habitat as designated by the USFWS. Critical habitat for the coastal California gnatcatcher occurs approximately three miles to the north and more than four miles to the west of the project site. There is no critical habitat immediately adjacent to the project site.

4.4 Nesting Birds

The project site does have shrubs and trees that can support nesting song birds or raptors. The 23.4 acres of developed habitat, 20.2 acres of disturbed non-native vegetation habitat, 3.20 acres of disturbed non-native grasses habitat, 1.15 acres of disturbed coastal sage scrub, 0.87 acres of ornamental vegetation habitat, 0.16 acres of streambed, and 0.07 acres of mulefat habitat are considered habitat that can be utilized by nesting birds and raptors during the nesting bird season of February 1 through September 15.

4.5 Wildlife Movement Corridors

The project site is too isolated by residential and commercial structures to function as a wildlife movement corridor. There are no major riparian areas or canyons that can function as a corridor for wildlife. The project site also has a high amount of anthropomorphic disturbances to adequately function as a wildlife movement corridor.

4.6 Western Riverside Multiple Species Habitat Conservation Plan

4.6.1 Section 6.1.2 Protection of Species Associated with Riparian/Riverine Areas and Vernal Pools

The project site contains approximately 0.16 acres of streambed, and 0.07 acres of mulefat habitat for a total of 0.23 acre of riparian habitat. This habitat is also regulated under Section 1602 of the California Department of Fish and Game Code for the protection of lake or streams and under Section 404 and 401 of the Clean Water Act. This habitat is also considered riparian/riverine areas as defined in Section 6.1.2 of the Western Riverside MSHCP. Any project impacts to this habitat will need to be in compliance with Section 6.1.2 of the Western Riverside MSHCP. No vernal pools were observed within the project boundaries.

4.6.2 Section 6.1.3 Protection of Narrow Endemic Plant Species

The project site is not located within the narrow endemic plants overlay of the MSHCP and there are no habitat assessment requirements for narrow endemic plant species as identified in the MSHCP

4.6.3 Section 6.1.4 Guidelines Pertaining to the Urban/Wildlands Interface

The project site is not located within a Western Riverside MSHCP linkage or criteria cell. Therefore, the project is not subject to Section 6.1.4 pertaining to urban/wildlands interface.

4.6.4 Section 6.3.2 Guidelines Additional Survey Needs and Procedures

Riverside County Transportation and Land Management (TLMA) requires a habitat assessment for burrowing owl. If habitat is present than focused burrowing owl surveys as described in the Western Riverside MSHCP *Burrowing Owl Survey Instructions*. The 20.2 acres of disturbed non-native vegetation habitat, and the 3.20 acres of disturbed non-native grasses habitat, is suitable for burrowing owl. Focused surveys were performed in compliance with TLMA requirements. No burrowing owl were found.

4.7 Other City, County, Regional, State, or Federal Conservation Plans

The project site is located within an independent cell group of the Reche Canyon/Badlands area plan of the Western Riverside MSHCP.

4.8 State and Federal Jurisdictional Drainages

The project site contains approximately 0.16 acres of streambed, and 0.07 acres of mulefat habitat for a total of 0.23 acre of riparian habitat. This habitat is regulated under Section 1602 of the California Department of Fish and Game Code for the protection of lake or streams and under Section 404 and 401 of the Clean Water Act. No vernal pools were observed within the project boundaries.

4.9 Oak Trees

The project site does not contain oak trees.

5.0 Project Impacts

5.1 Impacts to Existing Habitats

The proposed project is expected to impact 23.4 acres of developed habitat, 20.2 acres of disturbed non-native vegetation habitat, 3.20 acres of disturbed non-native grasses habitat, 1.15 acres of disturbed coastal sage scrub, 0.87 acres of ornamental vegetation habitat, 0.16 acres of streambed, and 0.07 acres of mulefat habitat (Figure 5).

5.2 Impacts to Sensitive Species

One species was identified to the potential to occur on site. Project activities were evaluated to determine the potential for impacts to these species.

San Bernardino Aster

The San Bernardino Aster (*Symphyotrichum defoliatum*) is a CNPS 1B.2 listed plant that is found in grasslands or disturbed habitats. It blooms between the months of July and November. The project site contains habitat for this species.

Cooper's Hawk

Cooper's hawk (*Accipiter cooperii hawk*) is a CDFW watch list species and International Union for Conservation of Nature (IUCN) species of least concern. The species foraging habitat includes rivers, and woodlands including willows, cottonwoods, and sycamores. Nesting habitat for this species occurs at the project site in the Eucalyptus trees adjacent to the site. This species is covered by the Western Riverside MSHCP and is considered adequately conserved.

Bell's Sage Sparrow

Bell's sage sparrow (*Artemisiospiza belli belli*) is a CDFW watch list species and USFWS bird of conservation concern. The species nests in coastal sage scrub and chaparral. The project site supports

some disturbed coastal sage scrub that may serve as habitat. This species is potentially present. This species is covered by the Western Riverside MSHCP and is considered adequately conserved.

Orange-throat Whiptail

Orange-throat whiptail (*Aspidoscelis tpeyrythra*) is a CDFW species of special concern and IUCN species of least concern. The species inhabits low elevation coastal scrub, chamise-redshank chaparral, mixed chaparral, and valley-foothill hardwood habitat. The project site supports some disturbed coastal sage scrub that may serve as habitat. This species is potentially present. This species is covered by the Western Riverside MSHCP and is considered adequately conserved.

Coastal Whiptail

Coastal whiptail (*Aspidoscelis hyperythra*) is a CDFW species of special concern and IUCN species of least concern. It is found in a variety of ecosystems, primarily in hot and dry open areas with sparse foliage – chaparral, woodland, and riparian areas. The project site supports habitat for this species. This species is potentially present. This species is covered by the Western Riverside MSHCP and is considered adequately conserved.

Red-diamond Rattlesnake

Red-diamond rattlesnake (*Crotalus ruber*) is a CDFW species of special concern. The species habitat includes coastal sage scrub or chaparral with granite boulders. The project site supports habitat for this species. This species is potentially present. This species is covered by the Western Riverside MSHCP and is considered adequately conserved.

California Horned Lark

California horned lark (*Eremophila alpestris actia*) is a CDFW watch list species and IUCN species of least concern. The species is found in open areas dominated by sparse low herbaceous vegetation or widely scattered low shrubs. The project site supports habitat for this species. This species is potentially present. This species is covered by the Western Riverside MSHCP and is considered adequately conserved.

Western Yellow Bat

Western yellow bat (*Lasiurus xanthinus*) is a CDFW species of special concern and IUCN species of least concern. The species occupies a range of habitats of extremely arid areas including savannas, secluded woodlands, regions dominated by pasture or croplands, and residential areas. It is insectivorous and often roosts in trees. The project site supports limited roosting habitat for this species. This species is potentially present.

San Diego Black-tailed Jackrabbit

San Diego black-tailed jackrabbit is a CDFW species of special concern. The species habitat includes chaparral and coastal sage scrub. The project site supports limited habitat for this species. This species

is potentially present. This species is covered by the Western Riverside MSHCP and is considered adequately conserved.

Coast Horned Lizard

Coast horned lizard (*Phrynosoma blainvillii*) is a CDFW species of special concern and IUCN species of least concern. The species inhabits open areas of sandy soils and low vegetation in valleys, foothills and semiarid mountains. It is found in grasslands, coniferous forests, woodlands, and chaparral, with open areas and patches of loose soil. The project site supports limited habitat for this species. This species is potentially present. This species is covered by the Western Riverside MSHCP and is considered adequately conserved.

Lawrence's Goldfinch

Lawrence's goldfinch (*Spinus lawrencei*) is an IUCN species of least concern. The species inhabits open woodlands, chaparral, and weedy fields. The project site supports limited habitat for this species in the basin located adjacent to the eastern project boundary. This species is potentially present.

5.3 Nesting Birds

The project site does have shrubs and trees that can support nesting song birds or raptors. The 23.4 acres of developed habitat, 20.2 acres of disturbed non-native vegetation habitat, 3.20 acres of disturbed non-native grasses habitat, 1.15 acres of disturbed coastal sage scrub, 0.87 acres of ornamental vegetation habitat, 0.16 acres of streambed, and 0.07 acres of mulefat habitat are considered habitat that can be utilized by nesting birds and raptors during the nesting bird season. Potential impacts to nesting birds may occur if ground disturbing activities or vegetation removal occur during the bird nesting season of February 1 through September 15.

5.4 Impacts to Critical Habitat

The project is not located within designated federal critical habitat. No impact to critical habitat would occur.

5.5 Impacts to Wildlife Movement Corridors

No impacts to wildlife movement corridors is expected.

5.6 Conflict with Local Policies or Ordinances Protecting Biological Resources

Project is expecting removal of trees and will have to comply with City of Moreno Valley Landscape Ordinance Municipal Code § 9.17.030.

5.7 Conflict with the Provisions of an Adopted Habitat Conservation Plan, Natural Community Conservation Plan, or Other Approved Local, Regional, or State Habitat Conservation Plan

The project is within the Western Riverside MSHCP. If Western Riverside MSHCP guidelines and requirements are followed, no conflicts are expected.

5.8 State and Federal Drainages

The project site will impact approximately 0.16 acres of streambed, and 0.07 acres of mulefat habitat for a total of 0.23 acre of riparian habitat. This habitat is regulated under Section 1602 of the California Department of Fish and Game Code for the protection of lake or streams and under Section 404 and 401 of the Clean Water Act. No impacts to vernal pools are expected.

5.9 Impacts to Section 6.1.2 Protection of Species Associated with Riparian/Riverine Areas and Vernal Pools

The project site is expected to impact approximately 0.16 acres of streambed, and 0.07 acres of mulefat habitat for a total of 0.23 acre of riparian habitat. This habitat is also regulated under Section 1602 of the California Department of Fish and Game Code for the protection of lake or streams and under Section 404 and 401 of the Clean Water Act. This habitat is also considered riparian/riverine areas as defined in Section 6.1.2 of the Western Riverside MSHCP. Any project impacts to this habitat will need to be in compliance with Section 6.1.2 of the Western Riverside MSHCP. No vernal pools were observed within the project boundaries.

5.10 Impacts to Section 6.1.3 Protection of Narrow Endemic Plant Species

The project site is not located within the narrow endemic plant overlay of the MSHCP; therefore, no impacts to narrow endemic plants are expected.

5.11 Impacts to Section 6.1.4 Guidelines Pertaining to the Urban/Wildlands Interface

The project site is not located within a Western Riverside MSHCP linkage or criteria cell. Therefore, the project is not subject to Section 6.1.4 pertaining to urban/wildlands interface.

5.12 Impacts to Section 6.3.2 Guidelines Additional Survey Needs and Procedures

Riverside County Transportation and Land Management (TLMA) requires a habitat assessment for burrowing owl. If habitat is present than focused burrowing owl surveys as described in the Western Riverside MSHCP *Burrowing Owl Survey Instructions*. The 20.2 acres of disturbed non-native vegetation habitat, and the 3.20 acres of disturbed non-native grasses habitat, is suitable for burrowing owl and focused surveys were performed in compliance with TLMA requirements. Focused burrowing

owl surveys were conducted in the months of June, July, and August and no burrowing owl were found. No impacts are expected.

5.11 Impacts to Oak Trees

No impacts to oak trees will occur.

6.0 Recommendations

In order to mitigate any potential impacts from project activities, the project should incorporate the following recommendations.

6.1 San Bernardino Aster

This species is not covered under the Western Riverside MSHCP but through participation in the plan, and the land acquisition and preservation by the plan, this species would be adequately covered.

6.2 Western Riverside MSHCP Covered Species

- Cooper's Hawk, Bell's Sage Sparrow, Coastal horned lizard, Orange-throat Whiptail, Coastal Whiptail, Red-diamond Rattlesnake, California Horned Lark, San Diego Black-tailed Jackrabbit are fully covered species under the Western Riverside MSHCP. The proposed project must be consistent with the Western Riverside MSHCP. Payment of the appropriate development mitigation fees will mitigate any impacts to these species. A fee schedule can be found in the Local Development Mitigation Fee Schedule for Fiscal Year 2015.
- Three days prior to any ground disturbing activities or vegetation removal, a qualified biological monitor should conduct a preconstruction survey to identify any sensitive biological resources to flag for avoidance. Any reptile species that may be present within the project area shall be relocated outside of the impact areas.

6.3 Nesting birds

- It is recommended that vegetation removal be conducted outside of the nesting season for migratory birds to avoid direct impacts. The migratory bird nesting season is between February 1 and September 15.
- If vegetation removal will occur during the migratory bird nesting season, between February 1 and September 15, it is recommended that pre-construction nesting bird surveys be performed within three days prior to vegetation removal.
- If active nests are found during nesting bird surveys, they shall be flagged and a 200-foot buffer shall be fenced around the nests.

- A biological monitor shall visit the site once a week during ground disturbing activities to ensure all fencing is in place and no sensitive species are being impacted.

6.4 State and Federal Drainages

- The project proponent shall consult with the California Department of Fish and Wildlife, the U.S. Army Corps of Engineers, and the Santa Ana Regional Water Quality Control Board to determine the need for permits that must be obtained prior to initiation of construction of the proposed project.
- The loss of Western Riverside MSHCP riverine resources will require preparation of an MSHCP Determination of Biologically Equivalent or Superior Preservation (DBESP).

7.0 Certification

“CERTIFICATION: I hereby certify that the statements furnished above and in the attached exhibits present the data and information required for this biological evaluation, and that the facts, statements, and information presented are true and correct to the best of my knowledge and belief.”



Signed

PROJECT MANAGER

Fieldwork Performed By:

Juan Hernandez

PRINCIPAL BIOLOGIST

8.0 References

- Burt, W. H., 1986. A Field Guide to the Mammals in North American North of Mexico. Houghton Mifflin Company, Boston, Massachusetts.
- California Department of Fish and Game, 2013. Special Animals List.
- California Native Plant Society, California Native Plant Status Report, 1985a. *Centrostegia leptoceras*.
- California Native Plant Society, California Native Plant Status Report, 1985b. *Eriastrum densifolium* var. *sanctorum*.
- Garrett, K. and J. Dunn, 1981. Birds of Southern California. Los Angeles Audubon Society. The Artisan Press, Los Angeles, California.
- Grenfell, W. E., M. D. Parisi, and D. McGriff, 2003. A Check-list of the Amphibians, Reptiles, Birds and Mammals of California. California Wildlife Habitat Relationship System, California Department of Fish and Game, Sacramento, California.
- Grinnell, J., 1933. Review of the Recent Mammal Fauna of California. University of California Publications in Zoology, 40:71-234.
- Hall, E. R., 1981. The Mammals of North America, Volumes I and II. John Wiley and Sons, New York, New York.
- Hickman, J. C., ed. 1993. The Jepson Manual: Higher Plants of California. University of California Press.
- Ingles, L. G., 1965. Mammals of the Pacific States. Stanford University Press, Stanford, California.
- Jameson, jr., E. W. and H. J. Peters. California Mammals. University of California Press, Berkeley, Los Angeles, London. 403 pp.
- Lackey, J. 1996. *Chaetodipus fallax*. Mammalian Species No. 517. American Society of Mammalogists.
- McKernan, R. L., 1997. The Status and Known Distribution of the San Bernardino Kangaroo Rat (*Dipodomys merriami parvus*): Field surveys conducted between 1987 and 1996. Report prepared for the U.S. Fish and Wildlife Service, Carlsbad Field Office.

- Meserve, P. 1976. Food relationships of a rodent fauna in a California coastal sage scrub community. *Journal of Mammalogy*, 57: 300-319.
- Munz, P.A., 1974. *A Flora of Southern California*. University of California Press, Berkeley, California.
- Peterson, R. 1990 *A Field Guide to Western Birds*. Houghton Mifflin Company, Boston, MA.
- Rey-Vizgirdas, E.M., 1994. Status and Conservation of the Endangered Slender-horned spineflower (*Dodecahema leptoceras*)
- Riverside County Integrated Project (RCIP) 2003 Final Multiple Species Habitat Conservation Plan (MSHCP). Riverside, CA.
- Sawyer, J.O., T. Keeler-Wolf, and J.M. Evens 2009 *A Manual of California Vegetation, 2nd edition*. California Native Plant Society Press, Sacramento, CA.
- U.S. Fish and Wildlife Service, 1998b. Endangered and Threatened Wildlife and Plants; Final Rule to List the San Bernardino Kangaroo Rat as Endangered, Vol. 63, No. 185, pp. 51005 – 51017.
- U.S. Fish and Wildlife Service, 2014. Endangered and Threatened Wildlife and Plants. <https://www.fws.gov/endangered/species/us-species.html>; Accessed June 2015
- Web Soil Survey. Available online at <http://websoilsurvey.nrcs.usda.gov/>. Accessed November 2015.
- Wheeler, J., 1988. Recent Ecological Investigations and Present Status of the Endangered Santa Ana River Woolly-Star, *Eriastrum densifolium* spp. *sanctorum* (Milliken) Mason. *Crossosoma*, Vol 14, No. 3. pp. 1-17.
- Williams, D. F., 1986. Mammalian Species of Special Concern in California. Wildlife Management Division Administrative Report 86-1. Prepared for The Resources Agency, California Department of Fish and Game.
- Zeiner, D. C., W. F. Laudenslayer, Jr., K. E. Mayer and M. White, 1990. California's Wildlife, Volume III Mammals, The Resources Agency, Department of Fish and Game, Sacramento, California.
- Zemba, R. and K.J. Kramer, 1984. The known distribution and unknown future of Santa Ana River woolly-star (*Eriastrum*). *Crossosoma*, Vol. 10, No. 5.

FIGURES

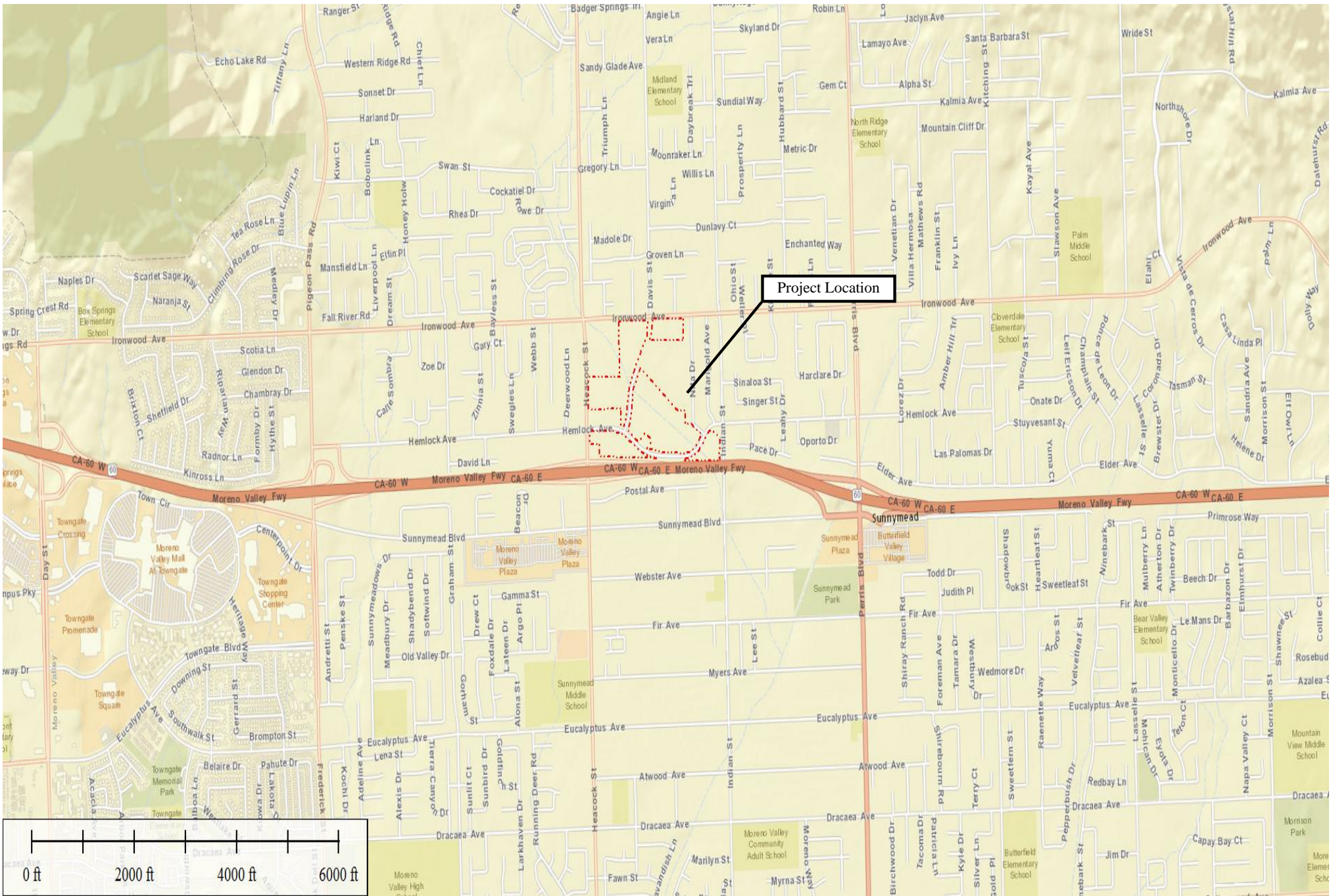


Figure 1
 Location Map
 Moreno Valley Festival
 City of Moreno Valley, Riverside County, CA

Legend



Property Boundary



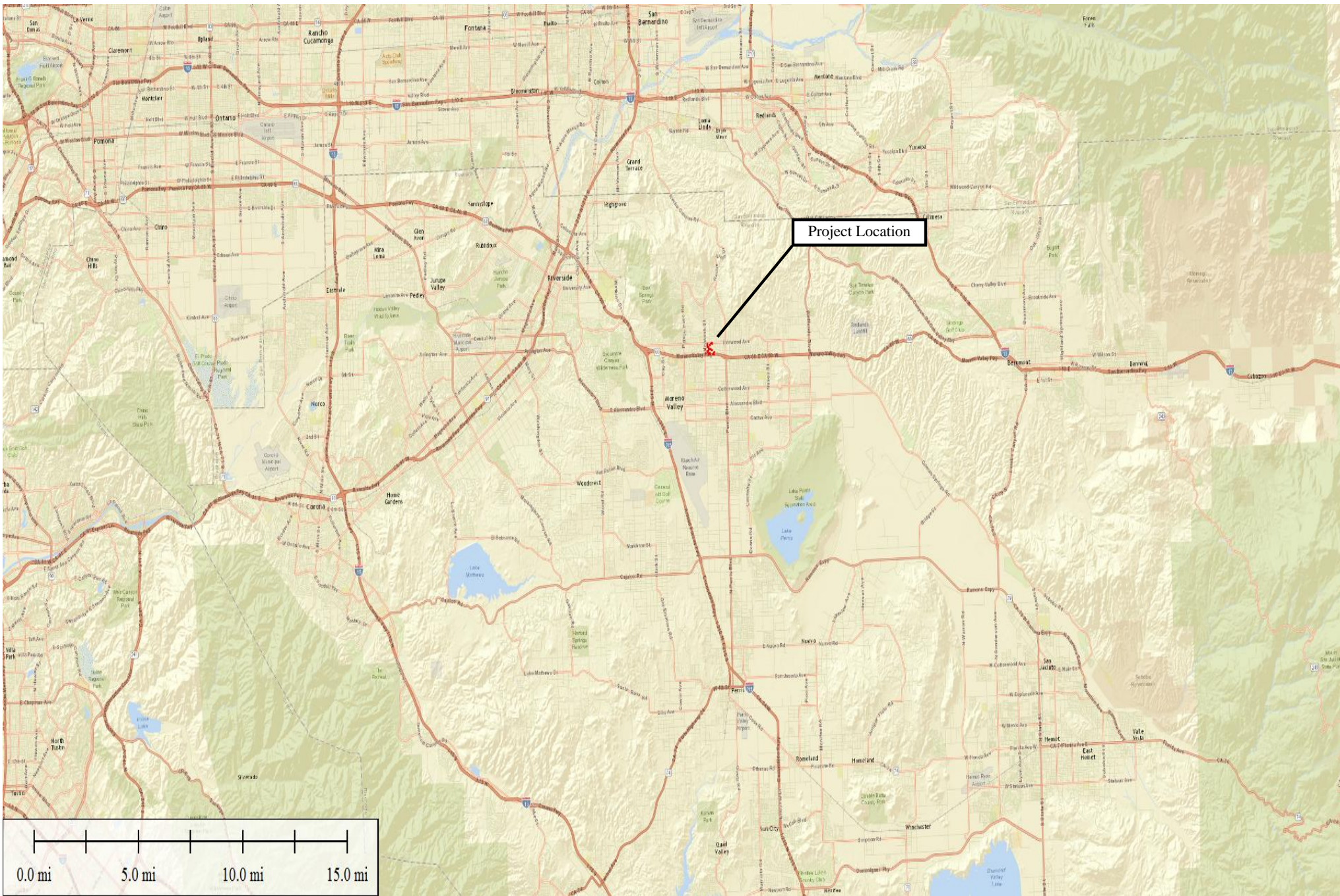


Figure 2
 Vicinity Map
 Moreno Valley Festival
 City of Moreno Valley, Riverside County, CA


 Legend
 Property Boundary





Figure 3
 Project Plans
 Moreno Valley Festival
 City of Moreno Valley, Riverside County, CA



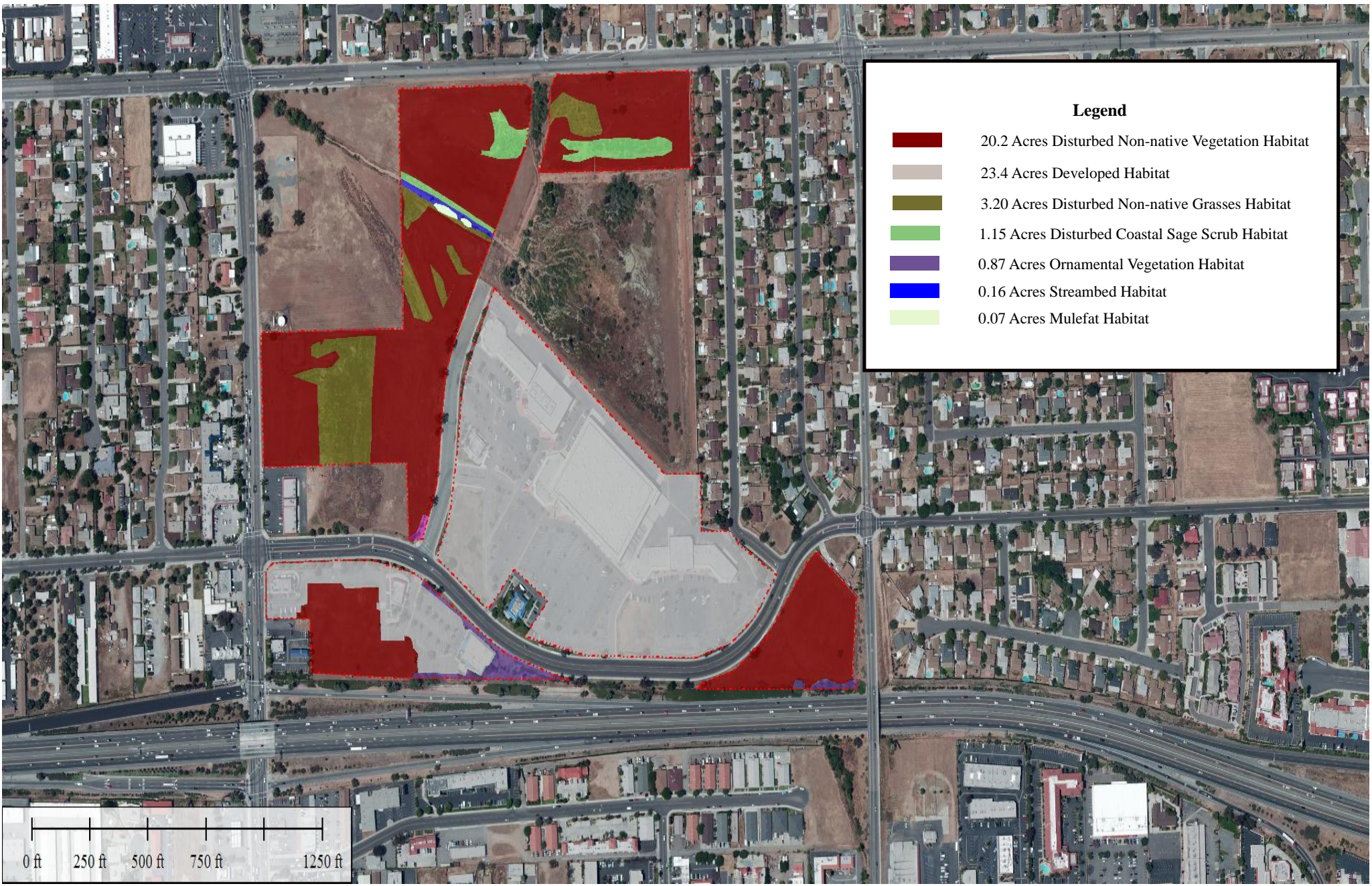


Figure 4
 Habitat Map
 Moreno Valley Festival
 City of Moreno Valley, Riverside County, CA



Appendix A Species List

Plant List

<i>Acmispon strigosus</i>	Lotus
<i>Amaranthus sp.</i>	Pigweed
<i>Ambrosia psilostachya</i>	Western ragweed
<i>Avena barbata</i>	Oats
<i>Baccharis salicifolia</i>	Mulefat
<i>Brassica nigra</i>	Black mustard
<i>Brassica tournefortii</i>	Common mustard
<i>Bromus diandrus</i>	Ripgut brome
<i>Bromus hordeaceus</i>	soft chess
<i>Bromus madritensis</i>	Foxtail
<i>Chamaesyce prostrata</i>	Prostrate spurge
<i>Centaurea melitensis</i>	Tacalote
<i>Cirsium vulgare</i>	Bull thistle
<i>Convolvulus arvensis</i>	Field bindweed
<i>Cucurbita foetidissima</i>	Gord
<i>Datura stramonium</i>	Jimson weed
<i>Deinandra fasciculata</i>	Tarweed
<i>Encelia farinosa</i>	Brittlebush
<i>Erigeron canadensis</i>	Horseweed
<i>Eriogonum fasciculatum</i>	California buckwheat
<i>Erodium cicutarium</i>	Filaree
<i>Eucalyptus sp.</i>	Eucalyptus
<i>Helianthus petiolaris</i>	Sunflower
<i>Hirschfeldia incana</i>	Mustard

<i>Hordeum murinum</i>	Foxtail barley
<i>Hordeum vulgare</i>	Barley
<i>Isocoma menziesii</i>	Goldenbush
<i>Malva parviflora</i>	Cheeseweed
<i>Marrubium vulgare</i>	Horehound
<i>Nerium oleander</i>	Oleander
<i>Nicotina glauca</i>	Tree tobacco
<i>Ricinus communis</i>	Castor bean
<i>Rumex crispus</i>	Curly dock
<i>Salix laevigata</i>	Red Willow
<i>Salix lasiolepis</i>	Arroyo Willow
<i>Salsola tragus</i>	Russian Thistle
<i>Salvia apiana</i>	White sage
<i>Salvia mellifera</i>	Black sage
<i>Sambucus mexicana</i>	Mexican elderberry
<i>Schinus molle</i>	Peruvian pepper tree
<i>Tribulus terrestris</i>	Puncture vine
<i>Trichostema lanceolatum</i>	Vinegar weed
<i>Washingtonia robusta</i>	Mexican Fan palm

Animal List

<i>Aphelocoma californiaca</i>	Western scrub jay
<i>Buteo jamaicensis</i>	Red-tailed Hawk
<i>Calypte anna</i>	Anna's hummingbird
<i>Canis latrans</i>	Coyote
<i>Corvus corax</i>	Raven
<i>Corvus brachyrhynchos</i>	Crow
<i>Hirundo rustica</i>	Barn swallow
<i>Mimus polyglottos</i>	Mocking bird

Passer domesticus

House Sparrow

Sayornis nigricans

Black phoebe

Sceloporus occidentalis

Western fence lizard

Streptopelia decaocto

Euroasian collard dove

Sylvilagus audubonii

Desert cottontail

Thomomys bottae

Botha's pocket gopher

Tyrannus verticalis

Western kingbird

Zenaida macroura

Mourning dove

Appendix A Species List

Plant List

<i>Acmispon strigosus</i>	Lotus
<i>Amaranthus sp.</i>	Pigweed
<i>Ambrosia psilostachya</i>	Western ragweed
<i>Avena barbata</i>	Oats
<i>Baccharis salicifolia</i>	Mulefat
<i>Brassica nigra</i>	Black mustard
<i>Brassica tournefortii</i>	Common mustard
<i>Bromus diandrus</i>	Ripgut brome
<i>Bromus hordeaceus</i>	soft chess
<i>Bromus madritensis</i>	Foxtail
<i>Chamaesyce prostrata</i>	Prostrate spurge
<i>Centaurea melitensis</i>	Tacalote
<i>Cirsium vulgare</i>	Bull thistle
<i>Convolvulus arvensis</i>	Field bindweed
<i>Cucurbita foetidissima</i>	Gord
<i>Datura stramonium</i>	Jimson weed
<i>Deinandra fasciculata</i>	Tarweed
<i>Encelia farinosa</i>	Brittlebush
<i>Erigeron canadensis</i>	Horseweed
<i>Eriogonum fasciculatum</i>	California buckwheat
<i>Erodium cicutarium</i>	Filaree
<i>Eucalyptus sp.</i>	Eucalyptus
<i>Helianthus petiolaris</i>	Sunflower
<i>Hirschfeldia incana</i>	Mustard

<i>Hordeum murinum</i>	Foxtail barley
<i>Hordeum vulgare</i>	Barley
<i>Isocoma menziesii</i>	Goldenbush
<i>Malva parviflora</i>	Cheeseweed
<i>Marrubium vulgare</i>	Horehound
<i>Nerium oleander</i>	Oleander
<i>Nicotina glauca</i>	Tree tobacco
<i>Ricinus communis</i>	Castor bean
<i>Rumex crispus</i>	Curly dock
<i>Salix laevigata</i>	Red Willow
<i>Salix lasiolepis</i>	Arroyo Willow
<i>Salsola tragus</i>	Russian Thistle
<i>Salvia apiana</i>	White sage
<i>Salvia mellifera</i>	Black sage
<i>Sambucus mexicana</i>	Mexican elderberry
<i>Schinus molle</i>	Peruvian pepper tree
<i>Tribulus terrestris</i>	Puncture vine
<i>Trichostema lanceolatum</i>	Vinegar weed
<i>Washingtonia robusta</i>	Mexican Fan palm

Animal List

<i>Aphelocoma californiaca</i>	Western scrub jay
<i>Buteo jamaicensis</i>	Red-tailed Hawk
<i>Calypte anna</i>	Anna's hummingbird
<i>Canis latrans</i>	Coyote
<i>Corvus corax</i>	Raven
<i>Corvus brachyrhynchos</i>	Crow
<i>Hirundo rustica</i>	Barn swallow
<i>Mimus polyglottos</i>	Mocking bird

Passer domesticus

House Sparrow

Sayornis nigricans

Black phoebe

Sceloporus occidentalis

Western fence lizard

Streptopelia decaocto

Euroasian collard dove

Sylvilagus audubonii

Desert cottontail

Thomomys bottae

Botha's pocket gopher

Tyrannus verticalis

Western kingbird

Zenaida macroura

Mourning dove

APPENDIX B

Plants

Scientific Name	Common Name	Federal Listing	State Listing	CNPS Listing	Other Status	Habitat	Potential for Presence
Abronia villosa var. aurita	chaparral sand-verbena	None	None	1B.1	BLM_S-Sensitive USFS_S-Sensitive	Sandy places in coastal-sage scrub, chaparral; Elevation: < 1600 m. Flowering Time: Mar--Aug	Habitat too disturbed, disked, and no sandy areas. Not present.
Allium munzii	Munz's onion	Endangered	Threatened	1B.1	SB_RSABG -Rancho Santa Ana Botanic Garden	Grassy openings in coastal-sage scrub; Elevation: 300--900 m. Flowering Time: Apr--May	Habitat too disturbed and disked. Not present. Not inside narrow endemic plant survey area. Not present.
Ambrosia pumila	San Diego ambrosia	Endangered	None	1B.1		Disturbed sites; Elevation: 50--600 m. Flowering Time: Apr--Jul	Project area too disturbed. Basin is maintained. Not present.
Arenaria paludicola	marsh sandwort	Endangered	Endangered	1B.1	SB_SBBG-Santa Barbara Botanic Garden	Wet meadows, marshes; Elevation: < 300 m. Flowering Time: Late spring—summertime	Project area too disturbed. Basin is maintained. Not present.
Astragalus hornii var. hornii	Horn's milk-vetch	None	None	1B.1	BLM_S-Sensitive	Salty flats, lake shores; Elevation: 60--300 m. Flowering Time: May--Sep	No habitat present. Not present.
Astragalus pachypus var. jaegeri	Jaeger's milk-vetch	None	None	1B.1	BLM_S-Sensitive SB_RSABG -Rancho Santa Ana Botanic Garden USFS_S-Sensitive	Rocky or sandy areas; Elevation: 450--1200 m. Flowering Time: Dec--Jun	Habitat too disturbed and disked. Not present.
Atriplex coronata var. notatior	San Jacinto Valley crownscale	Endangered	None	1B.1	SB_RSABG -Rancho Santa Ana Botanic Garden	Alkaline flats; Elevation: 400--500 m. Flowering Time: Apr--Aug	No habitat present. Not present.

Plants

Atriplex parishii	Parish's brittlescale	None	None	1B.1	USFS_S- Sensitive	Alkaline or clay soils; Elevation: < 470 m. Flowering Time: Jun--Oct	No habitat present. Not present.
Atriplex serenana var. davidsonii	Davidson's saltscale	None	None	1B.2		Bluffs; Elevation: < 200 m. Flowering Time: Apr--Oct	No habitat present. Not present.
Berberis nevinii	Nevin's barberry	Endangered	Endangered	1B.1	SB_RSABG -Rancho Santa Ana Botanic Garden SB_SBBG- Santa Barbara Botanic Garden	Sandy to gravelly soils, washes, chaparral; Elevation: < 650 m. Flowering Time: Mar-- May	No habitat present. Not present.
Brodiaea filifolia	thread-leaved brodiaea	Threatened	Endangered	1B.1	SB_RSABG -Rancho Santa Ana Botanic Garden	Grassland, vernal pools; Elevation: 25--860 m. Flowering Time: Mar-- Jun	Project area too disturbed. Basin is maintained. Not present.
California macrophylla	round-leaved filaree	None	None	1B.1	BLM_S- Sensitive SB_RSABG -Rancho Santa Ana Botanic Garden SB_SBBG- Santa Barbara Botanic Garden	Open sites, grassland, scrub; Elevation: < 1200 m. Flowering Time: Mar--Jul	Habitat too disturbed and disked Not present.
Calochortus plummerae	Plummer's mariposa-lily	None	None	4.2	SB_RSABG -Rancho Santa Ana Botanic Garden	Dry, rocky chaparral, yellow- pine forest; Elevation: < 1700 m. Flowering Time: May-- Jul	No habitat present. Not present.

Plants

Canyon Live Oak Ravine Forest	Canyon Live Oak Ravine Forest	None	None						Not Present.
Carex comosa	bristly sedge	None	None	2B.1				Wet places; Elevation: < 400 m. Flowering Time: Jul--Sep	No habitat present. Not present.
Caulanthus simulans	Payson's jewelflower	None	None	4.2	USFS_S-Sensitive			Chaparral, scrub, pinyon/juniper woodland; Elevation: 400--2200 m. Flowering Time: Mar--Jun	Habitat too disturbed and disked Not present.
Chloropyron maritimum ssp. maritimum	salt marsh bird's-beak	Endangered	Endangered	1B.2	SB_RSABG -Rancho Santa Ana Botanic Garden			Coastal salt marsh; Elevation: < 10 m. Flowering Time: May--Oct	No habitat present. Not present.
Chorizanthe parryi var. parryi	Parry's spineflower	None	None	1B.1	BLM_S-Sensitive SB_RSABG -Rancho Santa Ana Botanic Garden USFS_S-Sensitive			Sand; Elevation: 90--800 m. Flowering Time: May--Jun	No habitat present. Not present.
Chorizanthe polygonoides var. longispina	long-spined spineflower	None	None	1B.2	BLM_S-Sensitive SB_RSABG -Rancho Santa Ana Botanic Garden			Sand; Elevation: 30--1500 m. Flowering Time: Apr--Jun	No habitat present. Not present.
Chorizanthe xanti var. leucotheca	white-bracted spineflower	None	None	1B.2	BLM_S-Sensitive USFS_S-Sensitive			Sand or gravel; Elevation: 400--1300 m. Flowering Time: Apr--Jun	No habitat present. Not present.

Plants

Cuscuta obtusiflora var. glandulosa	Peruvian dodder	None	None	2B.2	On herbs including Alternanthera, Dalea, Lythrum, Polygonum, Xanthium; Elevation: +/- < 500 m. Flowering Time: Jul--Oct	No habitat present. Not present.
Dodecahema leptoceras	slender-horned spineflower	Endangered	Endangered	1B.1	SB_RSABG -Rancho Santa Ana Botanic Garden Sand or gravel; Elevation: 200--700 m. Flowering Time: May--Jun	No habitat present. Not present.
Eriastrum densifolium ssp. sanctorum	Santa Ana River woollystar	Endangered	Endangered	1B.1	SB_RSABG -Rancho Santa Ana Botanic Garden Washes, floodplains, dry riverbeds; Elevation: < 500 m. Flowering Time: May--Sep	No habitat present. Not present.
Galium californicum ssp. primum	Alvin Meadow bedstraw	None	None	1B.2	BLM_S-Sensitive USFS_S-Sensitive Shade, lower elevations in Jeffrey-, Coulter-pine forests; Elevation: 1350--1700 m. Flowering Time: Mar--Jul	No habitat present. Not present.
Harpagonella palmeri	Palmer's grapplinghook	None	None	4.2	SB_RSABG -Rancho Santa Ana Botanic Garden Dry, semi-barren sites in chaparral, coastal scrub, grassland; Elevation: < 1000m. Bioregional . Flowering Time: Mar--Apr	Habitat too disturbed and disked Not present.
Helianthus nuttallii ssp. parishii	Los Angeles sunflower	None	None	1A	Marshes; Elevation: < 500 m. Flowering Time: Aug--Oct	No habitat present. Not present.
Horkelia cuneata var. puberula	mesa horkelia	None	None	1B.1	USFS_S-Sensitive Dry, sandy, coastal chaparral; Elevation: 70--870 m. Flowering Time: Mar--Jul	Habitat too disturbed and disked Not present.
Imperata brevifolia	California satintail	None	None	2B.1	SB_SBBG-Santa Barbara Botanic Garden USFS_S-Sensitive Wet springs, meadows, streambanks, floodplains; Elevation: < 500 m. Bioregional Distribution: Flowering Time: Sep--May	Site is too high in elevation for this species. Not present.

Plants

Lasthenia glabrata ssp. coulteri	Coulter's goldfields	None	None	1B.1	BLM_S-Sensitive SB_RSABG -Rancho Santa Ana Botanic Garden	Saline places, vernal pools; Elevation: < 1000 m. Flowering Time: Apr--May	No habitat present. Not present.
Lepidium virginicum var. robinsonii	Robinson's pepper-grass	None	None	4.3		Chaparral, coastal sage scrub, bollms Jan-July. Sandy to rocky slopes, canyons; Elevation: < 1000 m. Flowering Time: Mar--Apr	Habitat too disturbed and disked Not present.
Lycium parishii	Parish's desert-thorn	None	None	2B.3			No habitat present. Not present.
Monardella macrantha ssp. hallii	Dicots	None	None	1B.3	SB_RSABG -Rancho Santa Ana Botanic Garden USFS_S-Sensitive	Chaparral, woodland; Elevation: 600--2000 m. Flowering Time: May--Aug	No habitat present. Not present.
Myosurus minimus ssp. apus	Dicots	None	None	3.1		Vernal pools, flowers May-June.	No habitat present. Not present.
Nama stenocarpum	mud nama	None	None	2B.2		Intermittently wet areas; Elevation: < 810 m. Flowering Time: Mar--Oct	No habitat present. Not present.
Nasturtium gambelii	Gambel's water cress	Endangered	Threatened	1B.1	SB_RSABG -Rancho Santa Ana Botanic Garden SB_SBBG-Santa Barbara Botanic Garden	Marshes, streambanks, lake margins; Elevation: < 350 m. Flowering Time: May--Aug	No habitat present. Not present.

Plants

Navarretia fossalis	spreading navarretia	Threatened	None	1B.1	SB_RSABG -Rancho Santa Ana Botanic Garden	Vernal pools, ditches; Elevation: 30-- 1300 m. Flowering Time: Apr--Jun	No habitat present. Not present.
Ribes divaricatum var. parishii	Parish's gooseberry	None	None	1A		Moist woodland; Elevation: 60-- 310 m. Flowering Time: Mar-- Apr Note: Possibly extinct.	No habitat present. Not present.
Riversidian Alluvial Fan Sage Scrub	Riversidian Alluvial Fan Sage Scrub	None	None				Not Present.
Sidalcea hickmanii ssp. parishii	Parish's checkerbloom	None	Rare	1B.2	BLM_S- Sensitive SB_RSABG -Rancho Santa Ana Botanic Garden SB_SBBG- Santa Barbara Botanic Garden USFS_S- Sensitive	Chaparral, woodland, open conifer forest; Elevation: 1000-- 2200 m. Flowering Time: Jun--Aug	No habitat present. Not present.
Sidalcea neomexicana	Salt Spring checkerbloom	None	None	2B.2	USFS_S- Sensitive	Alkaline springs, marshes; Elevation: gener ally < 1500 m. Flowering Time: Apr--Jun	No habitat present. Not present.
Southern Coast Live Oak Riparian Forest	Southern Coast Live Oak Riparian Forest	None	None				Not Present.
Southern Cottonwood Willow Riparian Forest	Southern Cottonwood Willow Riparian Forest	None	None				Not Present.

Plants

Southern Riparian Forest	Southern Riparian Forest	None	None			Not Present.
Southern Riparian Scrub	Southern Riparian Scrub	None	None			Not Present.
Southern Sycamore Alder Riparian Woodland	Southern Sycamore Alder Riparian Woodland	None	None			Not Present.
Southern Willow Scrub	Southern Willow Scrub	None	None			Not Present.
Sphenopholis obtusata	prairie wedge grass	None	None	2B.2	Wet meadows, streambanks, ponds; Elevation: 240--2870 m. Flowering Time: Apr--Jun	No habitat present. Not present.
Streptanthus campestris	southern jewelflower	None	None	1B.3	BLM_S-Sensitive USFS_S-Sensitive Open, rocky conifer forest, chaparral, woodland; Elevation: 900--2300 m. Flowering Time: May--Jun	No habitat present. Not present.
Symphyotrichum defoliatum	San Bernardino aster	None	None	1B.2	BLM_S-Sensitive USFS_S-Sensitive Grassland, disturbed places; Elevation: < 2050 m. Flowering Time: Jul--Nov	Potentially present.
Tortula californica	California screw moss	None	None	1B.2	BLM_S-Sensitive sandy, soil, chenopod scrub, and valley foothill grasslands.	No habitat present. Not present.
Trichocoronis wrightii var. wrightii	Wright's trichocoronis	None	None	2B.1	Moist places, drying riverbeds; Elevation: < 500 m. Flowering Time: May--Sep	Site is too high in elevation for this species. Not present.

Animals

Scientific Name	Common Name	Federal Listing	State Listing	Other Status	Habitat	Potential for Presence
Accipiter cooperii	Cooper's hawk	None	None	CDFW_WL-Watch List IUCN_LC-Least Concern	Rivers with sandy banks, willows, cottonwoods, and sycamores; loose, gravelly areas of streams in drier parts of range.	Nesting habitat present in Eucalyptus trees on and adjacent to project area.
Agelaius tricolor	tricolored blackbird	None	Endangered	BLM_S-Sensitive CDFW_SSC-Species of Special Concern IUCN_EN-Endangered NABCI_RW L-Red Watch List USFWS_BC C-Birds of Conservation Concern	Nests in freshwater marsh habitat with Typha sp. And willows being dominant.	No habitat for this species. Not present.
Aimophila ruficeps canescens	southern California rufous-crowned sparrow	None	None	CDFW_WL-Watch List	on steep, dry, rocky hillsides with plenty of grasses and a scattering of shrubs and small trees, such as sagebrush or scrub oaks. Recently burned areas can provide good, open habitat. The birds tend to avoid areas of dense shrubs.	No habitat for this species. Not present.

Animals

Anniella pulchra pulchra	silvery legless lizard	None	None	CDFW_SSC -Species of Special Concern USFS_S- Sensitive	<p>Occurs in moist warm loose soil with plant cover. Moisture is essential. Occurs in sparsely vegetated areas of beach dunes, chaparral, pine-oak woodlands, desert scrub, sandy washes, and stream terraces with sycamores, cottonwoods, or oaks. Leaf litter under trees and bushes in sunny areas and dunes stabilized with bush lupine and mock heather often indicate suitable habitat. Often can be found under surface objects such as rocks, boards, driftwood, and logs.</p>	No habitat for this species. Not present.
					<p>BLM_S- Sensitive CDFW_SSC -Species of Special Concern IUCN_LC- Least Concern USFS_S- Sensitive WBWG_H- High Priority</p>	
Antrozous pallidus	pallid bat	None	None			No habitat for this species. Not present.

Animals

Aquila chrysaetos	golden eagle	None	None	<p>BLM_S-Sensitive Golden Eagles live in open and semiopen country featuring native vegetation across most of the Northern Hemisphere. They avoid developed areas and uninterrupted stretches of forest. They are found primarily in mountains up to 12,000 feet, canyonlands, rimrock terrain, and riverside cliffs and bluffs. Golden Eagles nest on cliffs and steep escarpments in grassland, chaparral, shrubland, forest, and other vegetated areas.</p> <p>CDFW_FP-Fully Protected CDFW_WL-Watch List IUCN_LC-Least Concern USFWS_BC C-Birds of Conservation Concern</p>	<p>No habitat for this species. Not present.</p>
Artemisiospiza belli	Bell's sage sparrow	None	None	<p>CDFW_WL-Watch List USFWS_BC C-Birds of Conservation Concern</p> <p>Nests in coastal sage scrub and chaparral.</p>	<p>Some very disturbed coastal sage scrub is present. Potentially present.</p>
Asio otus	long-eared owl	None	None	<p>CDFW_SSC-Species of Special Concern require a combination of grassland or other open country for foraging, and dense tall shrubs or trees for nesting and roosting. Pine stands and windbreaks or shelterbelts are favored winter roost habitat.</p> <p>IUCN_LC-Least Concern</p>	<p>No habitat for this species. Not present.</p>

Animals

Species	Common Name	State	Federal	Conservation Status	Habitat	Notes
Aspidoscelis hyperythra	orangethroat whiptail	None	None	CDFW_SSC -Species of Special Concern IUCN_LC-Least Concern USFS_S-Sensitive	This species inhabits low-elevation coastal scrub, chamise-redshank chaparral, mixed chaparral, and valley-foothill hardwood habitat	Some very disturbed coastal sage scrub is present. Potentially present.
Aspidoscelis tigris stejnegeri	coastal whiptail	None	None	CDFW_SSC -Species of Special Concern IUCN_LC-Least Concern USFS_S-Sensitive	Found in a variety of ecosystems, primarily hot and dry open areas with sparse foliage - chaparral, woodland, and riparian areas.	Some habitat may be present. Potentially present.
Athene cunicularia	burrowing owl	None	None	BLM_S-Sensitive CDFW_SSC -Species of Special Concern IUCN_LC-Least Concern USFWS_BC C-Birds of Conservation Concern	Lives in dry, open areas with no trees and short grass.	Surveys for this species were conducted on no burrowing owl were found. Not present.
Buteo regalis	ferruginous hawk	None	None	CDFW_WL-Watch List IUCN_LC-Least Concern USFWS_BC C-Birds of Conservation Concern	Open country, primarily prairies, plain and badlands, breeding in trees near streams or on steep slopes, sometimes on mounds in open desert.	No nesting habitat for this species. Not present.

Animals

Buteo swainsoni	Swainson's hawk	None	Threatened	BLM_S-Sensitive IUCN_LC-Least Concern USFWS_BC C-Birds of Conservation Concern	Swainson's Hawks favor open habitats for foraging.	No nesting habitat for this species. Not present.
Campylorhynchus brunneicapillus sandiegensis	coastal cactus wren	None	None	CDFW_SSC -Species of Special Concern USFS_S-Sensitive USFWS_BC C-Birds of Conservation Concern	Coastal sage scrub with thickets of Opuntia sp.	No nesting habitat for this species. Not present.
Catostomus santaanae	Santa Ana sucker	Threatened	None	AFS_TH-Threatened CDFW_SSC -Species of Special Concern IUCN_VU-Vulnerable	Flowing perennial or intermittent southern California streams. shrublands that vary from sparse desert shrublands to dense coastal scrub. Tends to be more abundant where rocks or shrubs provide cover. Lives in a variety of habitats: desert slopes, agave, rocky areas, coastal sage scrub, etc.	No habitat for this species. Not present.
Chaetodipus fallax fallax	northwestern San Diego pocket mouse	None	None	CDFW_SSC -Species of Special Concern		No habitat for this species. Not present.

Animals

Charina trivirgata	rosy boa	None	None	IUCN_LC-Least Concern USFS_S-Sensitive BLM_S-Sensitive NABCI_RW L-Red Watch List USFS_S-Sensitive USFWS_BC C-Birds of Conservation Concern CDFW_SSC-Species of Special Concern USFS_S-Sensitive	dry shrublands, desert, and near-desert areas. They are found among scattered rocks and boulders or on talus slopes. Preferred habitat is often on south-facing hillsides at elevations from sea level to over 2,000 meters. Rosy boas are rarely found far from rock cover. They seem to prefer habitats near free water, such as canyon or desert streams, but are not restricted to such areas.	No habitat for this species. Not present.
Coccyzus americanus occidentalis	western yellow-billed cuckoo	Threatened	Endangered	USFS_S-Sensitive USFWS_BC C-Birds of Conservation Concern CDFW_SSC-Species of Special Concern USFS_S-Sensitive	Breeding habitat primarily consists of large blocks, or contiguous areas, of riparian habitat, particularly cottonwood–willow riparian woodlands.	No habitat for this species. Not present.
Crotalus ruber	red-diamond rattlesnake	None	None	USFS_S-Sensitive	Coastal sage scrub or chaparral with granite boulders.	Some habitat may be present. Potentially present.
Diadophis punctatus modestus	San Bernardino ringneck snake	None	None	USFS_S-Sensitive	Prefers moist habitats, including wet meadows, rocky hillsides, gardens, farmland, grassland, chaparral, mixed coniferous forests, woodlands.	No habitat for this species. Not present.

Animals

Dipodomys stephensi	Stephens' kangaroo rat	Endangered	Threatened	IUCN_EN-Endangered	Typical habitat includes sparsely vegetated areas (perennial cover less than 30%) with loose, friable, well-drained soil (generally at least 0.5 m deep) and flat or gently rolling terrain.	No habitat for this species. Not present.
Elanus leucurus	white-tailed kite	None	None	BLM_S-Sensitive CDFW_FP-Fully Protected IUCN_LC-Least Concern	Commonly found in savanna, open woodlands, marshes, desert grassland, partially cleared lands, and cultivated fields.	No nesting habitat for this species. Not present.
Empidonax traillii extimus	southwestern willow flycatcher	Endangered	Endangered	NABCI_RW L-Red Watch List	Riparian forests.	No nesting habitat for this species. Not present.
Emys marmorata	western pond turtle	None	None	BLM_S-Sensitive CDFW_SSC-Species of Special Concern IUCN_VU-Vulnerable USFS_S-Sensitive	Found in ponds, lakes, streams, large rivers, slow-moving sloughs, and quiet waters. The turtles prefer aquatic habitats with exposed areas for basking, with aquatic vegetation, such as algae and other water plants, but they also live in clear waters, especially where there is cover such as boulders or fallen trees in the water. The western pond turtle also spends significant amounts of time in upland terrestrial habitats and has been found more than one kilometre from water.	No nesting habitat for this species. Not present.

Animals

Eremophila alpestris actia	California horned lark	None	None	<p>Open areas dominated by sparse low herbaceous vegetation or widely scattered low shrubs. Nests in hollow on ground often next to grass tuft or clod of earth or manure.</p> <p>CDFW_WL-Watch List IUCN_LC-Least Concern</p>	<p>Habitat for this species is present. Potentially present.</p>
Eumops perotis californicus	western mastiff bat	None	None	<p>BLM_S-Sensitive CDFW_SSC-Species of Special Concern WBWG_H-High Priority</p> <p>present only where there are significant rock features offering suitable roosting habitat. It is found in a variety of habitats, from desert scrub to chaparral to oak woodland and into the ponderosa pine belt.</p>	<p>No habitat for this species. Not present.</p>
Euphydryas editha quino	quino checkerspot butterfly	Endangered	None	<p>XERCES_CI-Critically Imperiled</p> <p>The larvae may use either Plantago erecta or Castilleja exserta, both of which may be common in meadows and upland sage scrub/chapparral habitat.</p>	<p>No habitat for this species. Not present.</p>
Gila orcuttii	arroyo chub	None	None	<p>AFS_VU-Vulnerable CDFW_SSC-Species of Special Concern USFS_S-Sensitive</p> <p>southern California coastal drainages.</p>	<p>No habitat for this species. Not present.</p>

Animals

Haliaeetus leucocephalus	bald eagle	Delisted	Endangered	BLM_S-Sensitive CDFW_S-Sensitive CDFW_FP-Fully Protected IUCN_LC-Least Concern USFS_S-Sensitive USFWS_BC C-Birds of Conservation Concern CDFW_SSC -Species of Special Concern IUCN_LC-Least Concern	generally found close to water	No habitat for this species. Not present.
Icteria virens	yellow-breasted chat	None	None	BLM_S-Sensitive CDFW_SSC -Species of Special Concern IUCN_LC-Least Concern	Riparian forests.	No habitat for this species. Not present.
Lampropeltis zonata (parvirubra)	California mountain kingsnake (San Bernardino population)	None	None	BLM_S-Sensitive CDFW_SSC -Species of Special Concern IUCN_LC-Least Concern USFS_S-Sensitive	Found in diverse habitats including coniferous forest, oak-pine woodlands, riparian woodland, chaparral, manzanita, and coastal sage scrub. Wooded areas near a stream with rock outcrops, talus or rotting logs that are exposed to the sun are good places to find this snake.	No habitat for this species. Not present.

Animals

Lanius ludovicianus	loggerhead shrike	None	None	<p>CDFW_SSC -Species of Special Concern Open country with scattered shrubs and trees is the typical habitat of IUCN_LC- Least Concern Loggerhead Shrike, but the species can also be found USFWS_BC in more heavily wooded C-Birds of habitats with large openings Conservation Concern and in very short habitats with few or no trees.</p> <p>No habitat for this species. Not present.</p>
Lasiurus xanthinus	western yellow bat	None	None	<p>CDFW_SSC -Species of Special Concern This species occupies a range of habitats of extremely arid areas to dry areas. It inhabits savannas, secluded woodlands, IUCN_LC- Least Concern regions dominated by pasture or croplands, and WBWG_H- High Priority even tolerates residential areas. It is insectivorous. It often roosts in trees.</p> <p>Very limited roosting habitat for this species. Potentially present.</p>
Leptonycteris yerbabuenae	lesser long-nosed bat	Endangered	None	<p>IUCN_VU- Vulnerable This bat roosts in caves and WBWG_H- High Priority mines, often in colonies of several thousand.</p> <p>No habitat for this species. Not present.</p>
Lepus californicus bennettii	San Diego black-tailed jackrabbit	None	None	<p>CDFW_SSC -Species of Special Concern Chaparral and coastal sage scrub.</p> <p>Very limited habitat for this species. Potentially present.</p>
Neotoma lepida intermedia	San Diego desert woodrat	None	None	<p>CDFW_SSC -Species of Special Concern Chaparral and coastal sage scrub.</p> <p>No habitat for this species. Not present.</p>

Animals

Nyctinomops femorosaccus	pocketed free-tailed bat	None	None	<p>CDFW_SSC -Species of Special Concern IUCN_LC-Least Concern WBWG_M-Medium Priority</p> <p>Roosts in caves, rock crevices in cliff faces, and man-made structures.</p>	No habitat for this species. Not present.
Onychomys torridus ramona	southern grasshopper mouse	None	None	<p>CDFW_SSC -Species of Special Concern</p> <p>Believed to inhabit flat, sandy, valley floor habitats</p>	No habitat for this species. Not present.
Perognathus longimembris brevinasus	Los Angeles pocket mouse	None	None	<p>CDFW_SSC -Species of Special Concern</p> <p>includes lower elevation grassland, alluvial sage scrub, and coastal sage scrub.</p> <p>Inhabits open areas of sandy soil and low vegetation in valleys, foothills and semiarid mountains. Found in grasslands, coniferous forests, woodlands, and chaparral, with open areas and patches of loose soil. Often found in lowlands along sandy washes with scattered shrubs and along dirt roads, and frequently found near ant hills.</p>	No habitat for this species. Not present.
Phrynosoma blainvillii	coast horned lizard	None	None	<p>BLM_S-Sensitive CDFW_SSC -Species of Special Concern IUCN_LC-Least Concern</p>	Very limited habitat for this species. Potentially present.
Plegadis chihi	white-faced ibis	None	None	<p>CDFW_WL-Watch List IUCN_LC-Least Concern</p> <p>Found in marsh habitat.</p>	No habitat for this species. Not present.

Animals

Polioptila californica californica	coastal California gnatcatcher	Threatened	None	CDFW_SSC -Species of Special Concern NABCI_YW L-Yellow Watch List	Coastal sage scrub.	No habitat for this species. Not present.
Rana muscosa	southern mountain yellow-legged frog	Endangered	Endangered	CDFW_SSC -Species of Special Concern IUCN_EN- Endangered USFS_S-Sensitive	Rocky stream courses in southern California perennial or intermittent streams.	No habitat for this species. Not present.
Rhaphiomidas terminatus abdominalis	Delhi Sands flower-loving fly	Endangered	None		Habitat consists of Delhi sands.	No habitat for this species. Not present.
Rhinichthys osculus ssp. 3	Santa Ana speckled dace	None	None	AFS_TH- Threatened CDFW_SSC -Species of Special Concern USFS_S-Sensitive	Cobble and rock southern California intermittent and perennial streams.	No habitat for this species. Not present.
Setophaga petechia	yellow warbler	None	None	CDFW_SSC -Species of Special Concern USFWS_BC C-Birds of Conservation Concern	Riparian scrub and thickets.	No habitat for this species. Not present.

Animals

Spea hammondii	western spadefoot	None	None	BLM_S-Sensitive CDFW_SSC -Species of Special Concern IUCN_NT-Near Threatened	Upland coastal sage scrub and needs vernal or seasonal pools to breed.	No habitat for this species. Not present.
Spinus lawrencei	Lawrence's goldfinch	None	None	IUCN_LC-Least Concern NABCI_YW L-Yellow Watch List USFWS_BC C-Birds of Conservation Concern	Open woodlands, chaparral, and weedy fields.	Very limited habitat for this species in the basin. Potentially present.
Streptocephalus woottoni	Riverside fairy shrimp	Endangered	None	IUCN_EN-Endangered	Vernal pool habitat.	No habitat for this species. Not present.
Taxidea taxus	American badger	None	None	CDFW_SSC -Species of Special Concern IUCN_LC-Least Concern	Coastal sage scrub, chaparral, mountain woodlands, desert habitat.	No habitat for this species. Not present.

Animals

Thamnophis hammondii	two-striped garter snake	None	None	BLM_S-Sensitive CDFW_SSC-Species of Special Concern IUCN_LC-Least Concern USFS_S-Sensitive IUCN_NT-Near Threatened NABCI_YWL-Yellow Watch List	Generally found around pools, creeks, cattle tanks, and other water sources, often in rocky areas, in oak woodland, chaparral, brushland, and coniferous forest.	No habitat for this species. Not present.
Vireo bellii pusillus	least Bell's vireo	Endangered	Endangered	NABCI_YWL-Yellow Watch List	Riparian areas dominated by mulefat and willows.	No habitat for this species. Not present.

APPENDIX C

Moreno Valley Trails Site Photographs



Disturbed non-native vegetation habitat.



Disturbed non-native grass habitat.

Moreno Valley Trails Site Photographs



Disturbed coastal sage scrub habitat.



Stream habitat with nmulefat habitat to the center right.

Moreno Valley Trails Site Photographs



Ornamental habitat



Disturbed non-native vegetation habitat with eucalyptus tree and developed portions of property.

APPENDIX D

Soil Map—Western Riverside Area, California
(Festival at Moreno Valley (Soil Map))



Map Scale: 1:4,610 if printed on A landscape (11" x 8.5") sheet.




Map projection: Web Mercator Corner coordinates: WGS84 Edge tics: UTM Zone 11N WGS84





MAP LEGEND

Area of Interest (AOI)

 Area of Interest (AOI)

Soils

 Soil Map Unit Polygons

 Soil Map Unit Lines

 Soil Map Unit Points

Special Point Features



Blowout



Borrow Pit



Clay Spot



Closed Depression



Gravel Pit



Gravelly Spot



Landfill



Lava Flow



Marsh or swamp



Mine or Quarry



Miscellaneous Water



Perennial Water



Rock Outcrop



Saline Spot



Sandy Spot



Severely Eroded Spot



Sinkhole



Slide or Slip



Sodic Spot



Spoil Area



Stony Spot



Very Stony Spot



Wet Spot



Other



Special Line Features

Water Features



Streams and Canals

Transportation



Rails



Interstate Highways



US Routes



Major Roads



Local Roads

Background



Aerial Photography

MAP INFORMATION

The soil surveys that comprise your AOI were mapped at 1:15,800.

Warning: Soil Map may not be valid at this scale.

Enlargement of maps beyond the scale of mapping can cause misunderstanding of the detail of mapping and accuracy of soil line placement. The maps do not show the small areas of contrasting soils that could have been shown at a more detailed scale.

Please rely on the bar scale on each map sheet for map measurements.

Source of Map: Natural Resources Conservation Service
Web Soil Survey URL: <http://websoilsurvey.nrcs.usda.gov>
Coordinate System: Web Mercator (EPSG:3857)

Maps from the Web Soil Survey are based on the Web Mercator projection, which preserves direction and shape but distorts distance and area. A projection that preserves area, such as the Albers equal-area conic projection, should be used if more accurate calculations of distance or area are required.

This product is generated from the USDA-NRCS certified data as of the version date(s) listed below.

Soil Survey Area: Western Riverside Area, California
Survey Area Data: Version 7, Sep 17, 2014

Soil map units are labeled (as space allows) for map scales 1:50,000 or larger.

Date(s) aerial images were photographed: Jan 14, 2015—Jan 21, 2015

The orthophoto or other base map on which the soil lines were compiled and digitized probably differs from the background imagery displayed on these maps. As a result, some minor shifting of map unit boundaries may be evident.

Map Unit Legend

Western Riverside Area, California (CA679)			
Map Unit Symbol	Map Unit Name	Acres in AOI	Percent of AOI
GyA	Greenfield sandy loam, 0 to 2 percent slopes	3.5	5.2%
GyC2	Greenfield sandy loam, 2 to 8 percent slopes, eroded	9.9	14.7%
GyD2	Greenfield sandy loam, 8 to 15 percent slopes, eroded	4.6	6.9%
HcC	Hanford coarse sandy loam, 2 to 8 percent slopes	30.8	45.7%
MmB	Monserate sandy loam, 0 to 5 percent slopes	1.4	2.1%
RaB2	Ramona sandy loam, 2 to 5 percent slopes, eroded	15.6	23.1%
RaB3	Ramona sandy loam, 0 to 5 percent slopes, severely eroded	1.6	2.4%
TvC	Tujunga loamy sand, channeled, 0 to 8 percent slopes	0.0	0.0%
Totals for Area of Interest		67.4	100.0%