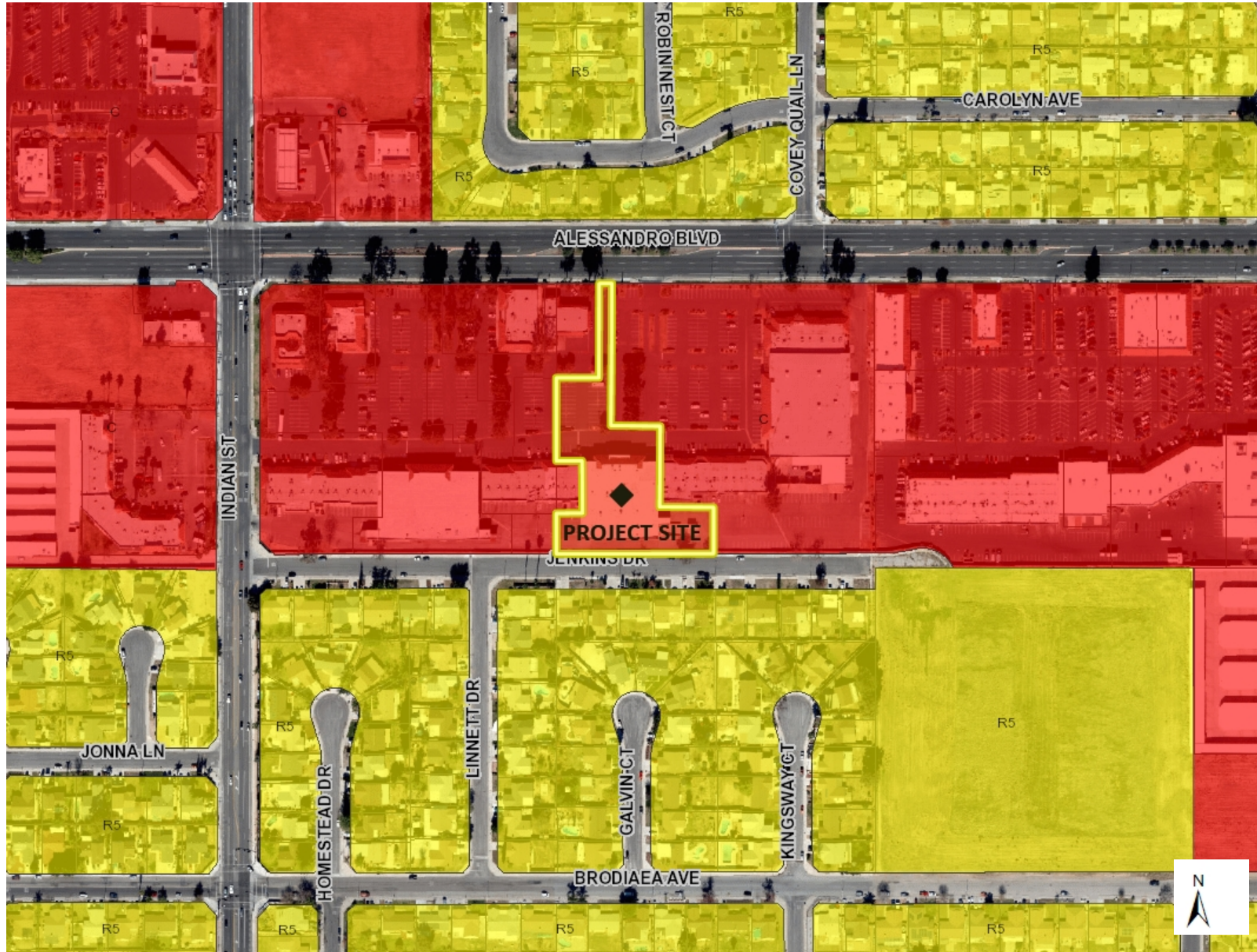


Commercial (C) General Plan Designation



Legend

Land Use

- Residential: Max. 1 du/ac
- Mixed Use
- Residential: Max. 2 du/ac
- Rural Residential: Max 2.5 du/ac
- Residential: Max. 3 du/ac
- Residential: Max. 5 du/ac
- Residential: Max. 5 or 15 du/ac
- Residential: Max. 10 du/ac
- Residential: Max. 15 du/ac
- Residential: Max. 20 du/ac
- Residential: Max. 30 du/ac
- Hillside Residential
- Planned Residential
- Residential/Office
- Office
- Commercial
- Business Park/Light Industrial
- Open Space
- Public Facilities
- Floodplain

Master Plan of Trails

- Bridge
- Improved
- Multiuse
- Proposed



631.0 0 315.48 631.0 Feet

DISCLAIMER: The information shown on this map was compiled from the City of Moreno Valley GIS and Riverside County GIS. The land base and facility information on this map is for display purposes only and should not be relied upon without independent verification as to its accuracy. Riverside County and City of Moreno Valley will not be held responsible for any claims, losses or damages resulting from the use of this map.

Notes

PEN19-0177 - Conditional Use Permit